

feenschach

die zeitschrift für märchenschach

Heft 250

Band XXXVII

Oktober – Dezember 2022

frühere Herausgeber **Wilhelm Karsch**, Band I-XI, 1949-1970, **Peter Kniest**, Band XII-XX, 1971-1988

unter Mitarbeit von *H. Doormann, W. Hagemann, R. Förster, P. Quindt, W. Schlitt, E. Bartel, H. Schiegl, H. Zander, H. Hofmann, L. Zagler, I. Kniest, T. Kühn/Kolkmeier, H. P. Rehm, G. Büsing, H.-P. Reich, D. Borst, J. M. Rice, V. Gülke, C. Feather* **Website: www.feenschach.de**

Herausgeber **bernd ellinghoven**, Königstr. 3, D-52064 Aachen, NEU *be.fee@mailbox.org*, 0177 5719981

Urdrucke an **Hans Gruber**, Ostengasse 34, D-93047 Regensburg, *hans.gruber@ur.de*

Lösungen an **Thomas Marx**, Töpferstr. 21, D-41515 Grevenbroich, *loe.fee@googlemail.com*

Mitarbeiter **Thomas Brand, Andrej Frolkin, Christine Gruber, Friedrich Hariuc, Stefan Höning, Ulrich Ring, Manfred Rittirsch, Bernd Schwarzkopf, Klaus Wenda**

Zahlungen an B. Ellinghoven, Sparkasse Aachen NEU

Bezugspreis 40,- EUR pro Jahr – IBAN: DE45 3905 0000 0016 0464 84, BIC: AACSD33

Förder-Abo 64,- EUR pro Jahr – Paypal +4% to: *be.fee@mailbox.org* *printed in Bratislava*

Die Urdrucke aus *f*-250 vorab

Ein Service Ihrer *feenschach*-Redaktion.



Urdrucke *f*-250, 7. Dezember 2022

Lösungen bis 21. Mai 2023 an Thomas Marx, Töpferstraße 21, D-41515 Grevenbroich

Es sind alle Aufgaben berücksichtigt, die bis zum 6. Dezember 2022 eingesandt wurden.

Sorry, es ist fast genau 1 Jahr her, dass der letzte Urdruckteil (*f*-246) online publiziert wurde (er erschien erst Ende November 2022 im Druck), daher gilt auch dieses Mal, was dort geschrieben wurde: „Schon wieder ist das letzte Erscheinen von *f* so lange her, dass wir es unseren treuen Autoren nicht zumuten können, mit einer 5-Aufgaben-pro-Heft-Quote gemäßregelt zu werden. Daher ist diese auch für dieses Heft ausgesetzt, bleibt aber im Prinzip dennoch in Kraft!“

Bewerten Sie doch die Urdrucke!

Zur Erinnerung hier das *f*-Bewertungssystem. Es gibt zwei Werte, einen Qualitätswert, der mit arabischen Ziffern (von 0 bis 5, wobei auch halbe Punkte möglich sind, also: 0 — 0.5 — 1 — ... — 5) angegeben wird, und einen Schwierigkeitswert (bitte möglichst *Ihre* Löseschwierigkeit, nicht die Dauer, die der Computer benötigte), der mit römischen Ziffern (von I bis V, ohne halbe Punkte) angegeben wird.

Je kleiner der Schwierigkeitswert ist, desto leichter, also: „I = kinderleicht, vom Blatt in 10 Sekunden gelöst“, „III = mittelschwer“, „V = superschwer, dafür habe ich mehrere Tage benötigt“.

Je kleiner der Qualitätswert ist, desto geringer die eingeschätzte Qualität, also: „0 = das Problem ist nicht veröffentlichungswürdig“, „5 = unstrittig Weltklasse“. Der Wert 2.5 bezeichnet ein „durchschnittliches Problem“. Wenn Sie mit Ihrem Wert ausdrücken wollen, dass Sie ein Problem gern im Preisbericht wiedersehen würden, sollten Sie mindestens 3 Punkte vergeben. Sie können dabei folgende Unterteilung als Richtwert benutzen:

Lob Ein Problem, das ein Lob bekommen sollte, sollte einen Wert von mindestens 3 erhalten.

Ehrende Erwähnung Ein Problem, das eine ehrende Erwähnung bekommen sollte, sollte einen Wert von mindestens 3.5 erhalten.

Preis Ein Problem, das einen Preis bekommen sollte, sollte einen Wert von mindestens 4 erhalten.

Ein Lexikon mit allen Märchenschachbegriffen, die in diesem Urdruckteil vorkommen (und vielen weiteren), finden Sie im Internet unter

<https://www.dieschwalbe.de/lexikon.htm>

Wenn Sie sich wundern sollten, wie bei Schach 960 ein Nachtreiter aufs Brett kommt (12744) ... ganz einfach – so wie in anderen Märchenschachproblemen auch (der Komponist hat ihn dort hingestellt, und für Retroanalysen wird angenommen, dass die Umwandlung in einen Nachtreiter erlaubt gewesen war). Sollten Sie darüber hinaus zu den Urdrucken weitere Erläuterungen benötigen, mailen Sie mir einfach! Viel Spaß beim Lösen und Kommentieren!

Preisrichter 2022

S# (12680-12695): N. N.

H#2-3 (12696-12711): N. N.

H#>3 (12712-12740): Nikola Stolev

Retro (12741-12765): Thomas Brand

Serienzüge (12766-12801): N. N.

Direktes Spiel (12802-12825): Reto Aschwanden

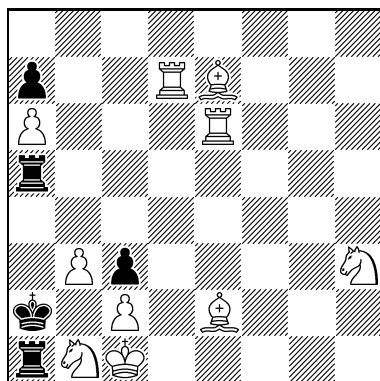
Hilfsspiel (12827-12879): N. N.

Hilfswingspiel (12880-12892): N. N.

3D-Schach Mehrjahresturnier (12893-12900): Hans Gruber

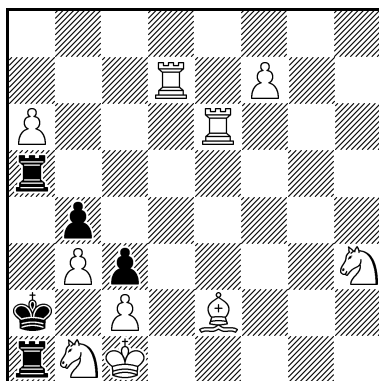
Und wer ein „N.N.“ in obiger Übersicht durch seinen eigenen Namen ersetzen mag, möge sich bei mir melden. (HG)

12680
Frank Fiedler
 Mügeln



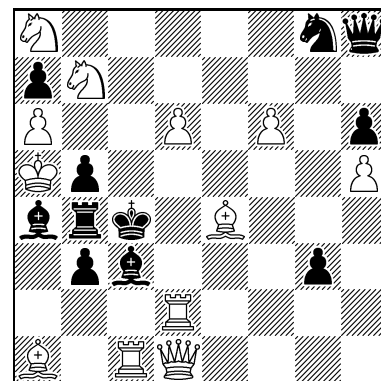
S#3*vvvvv C+ 10+5

12681
Frank Fiedler
 Mügeln



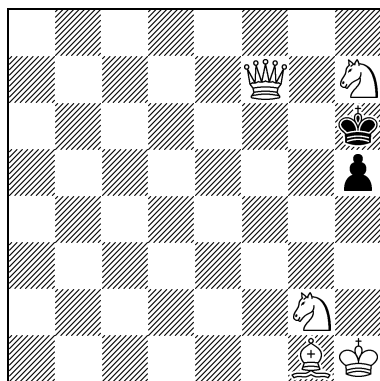
S#3*v C+ 10+5

12682
Gerald Ettl
 Meitingen



S#3 C+ 12+11

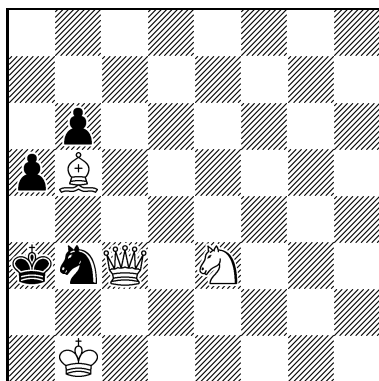
12683
Iwan Brjuchanow
 Tschaplinka



S#6 C+ 5+2

b) ♖g2 → ♜g2

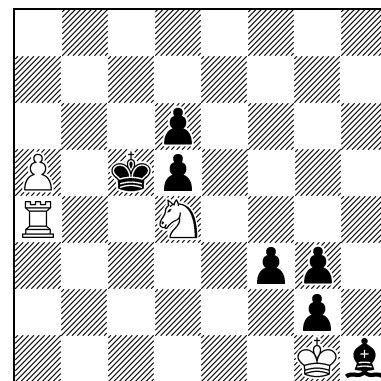
12684
Iwan Brjuchanow
 Tschaplinka



S#6 C+ 4+4

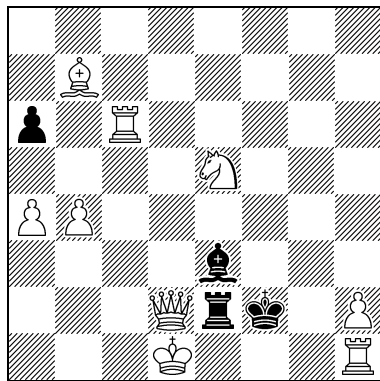
b) ♞b3 → ♜b3

12685
Frank Fiedler
 Mügeln



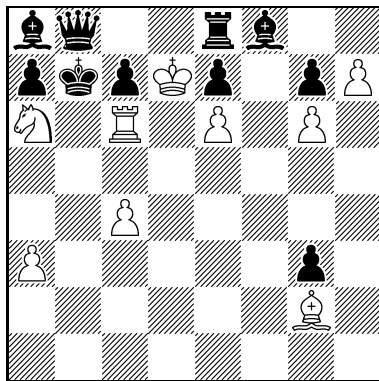
S#6* C+ 4+7

12686
Wolfgang Langbrandtner
 Leimen



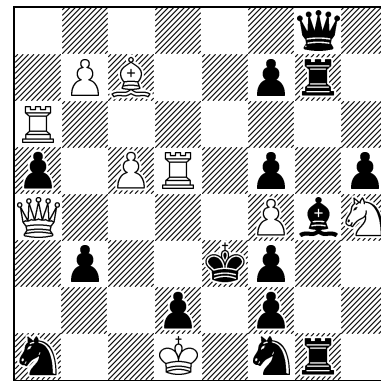
S#7 C+ 9+4

12687
Gunter Jordan
 Jena



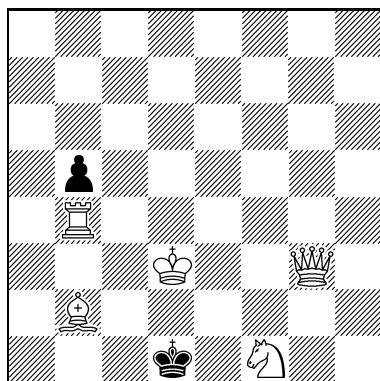
S#7 2 Lösungen C+ 9+10

12688
Camillo Gamnitzer
 Linz



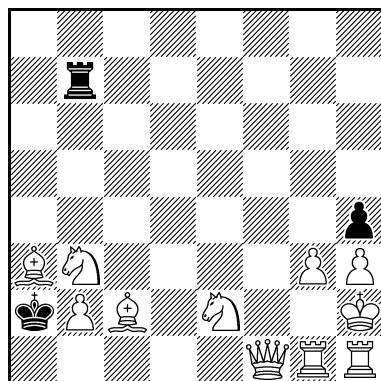
S#7 C+ 9+15

12689
Iwan Brjuchanow
 Tschaplinka



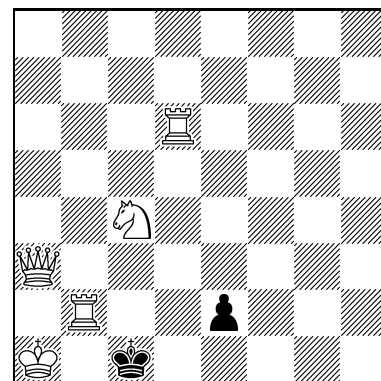
S#8 C+ 5+2

12690
Gerald Ettl
 Meitingen



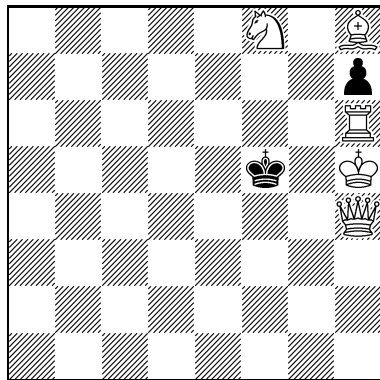
S#8 C+ 11+3

12691
Torsten Linß
 San Giljan



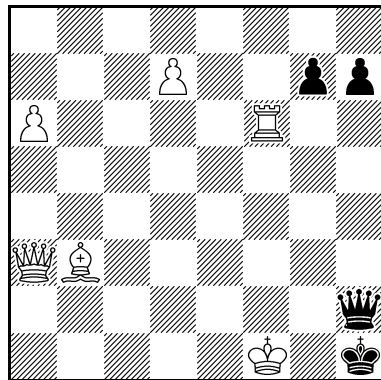
S#10 C+ 5+2

12692
Mirko Degenkolbe
 Meerane



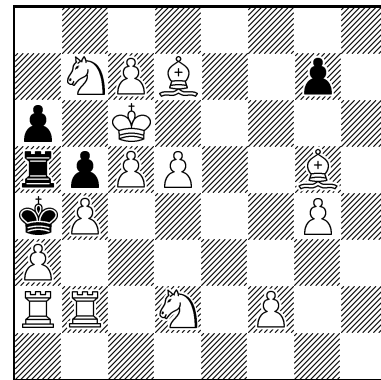
S#10 C+ 5+2

12693
Daniel Novomesky
 Bratislava



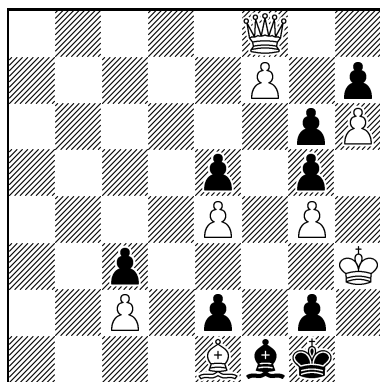
S#11 C+ 6+4

12694
Gennadi Kosjura
 Poltawa



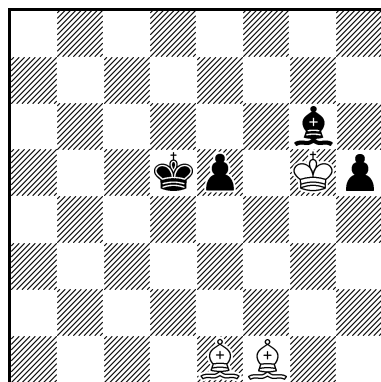
S#11 2 Lösungen 14+5

12695
Gunter Jordan
 Jena



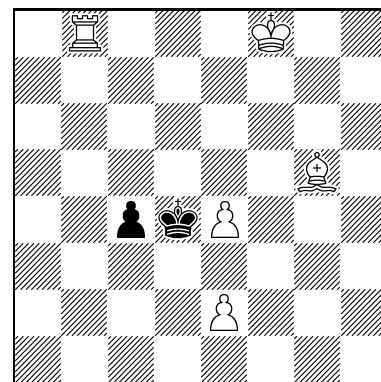
S#16 8+9

12696
Eligiusz Zimmer
 Piotrków Trybunalski



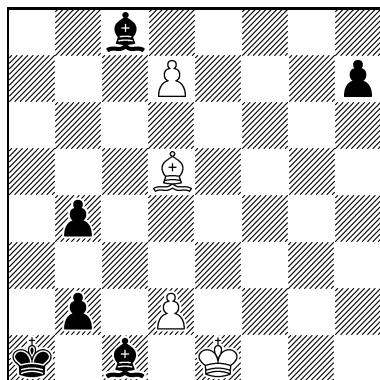
H#2 b) ♜g6→h3, C+ 3+4
 c) ♞d5→b1, d) ♞d5↔♞g5

12697
Eligiusz Zimmer
 Piotrków Trybunalski



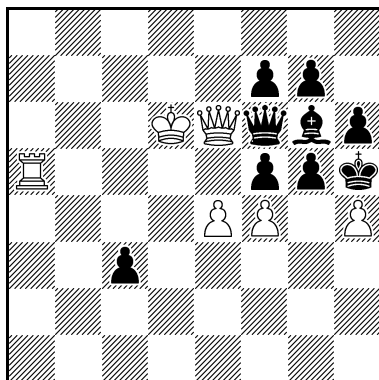
H#2** 2.1;1.1 C+ 5+2

12698
Jozef Ložek
Miroslav Svítek
 Lukáčovce / Mělník



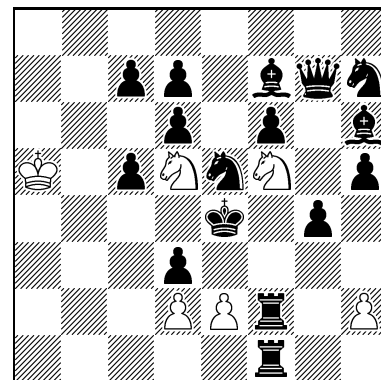
H#2 b) ♔a1→f6 C+ 4+6

12699
Fadil Abdurahmanović
Marko Klasinc
 Sarajevo / Ljubljana



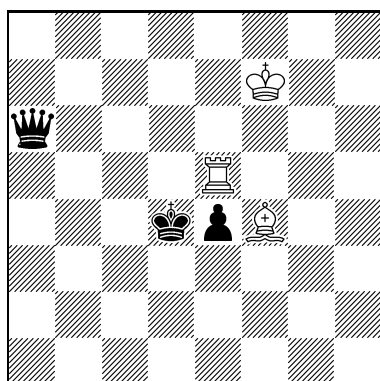
H#2 2.1;1.1 C+ 6+9

12700
Mykola Wasjutschko
Mykola Tschernjowski
 Mala Snihuriwka / Lwiw



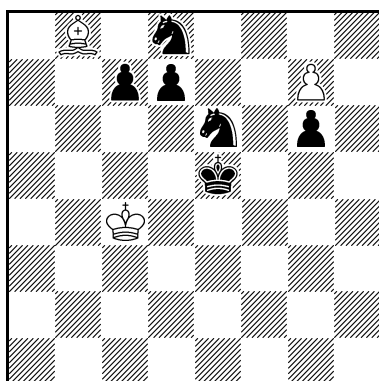
H#2 4.1;1.1 C+ 6+16

12701
Rolf Kohring
 Tuntenhausen



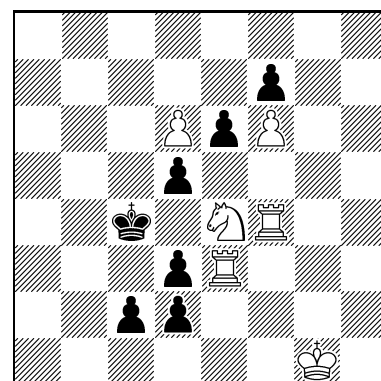
H#2.5 C+ 3+3
 b) ♔f7→g3

12702
Waleri N. Barsukow
 Sankt Petersburg



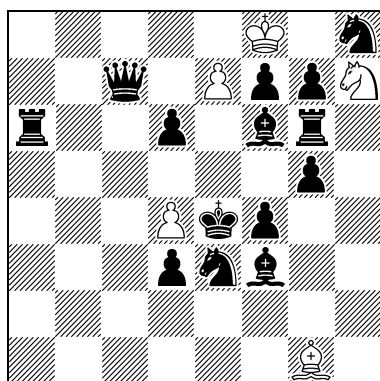
H#2.5 C+ 3+6
 b) ♖g7→d5

12703
Waleri N. Barsukow
 Sankt Petersburg



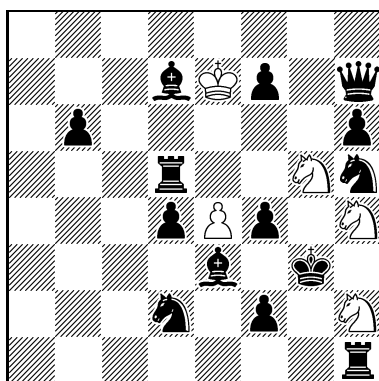
H#2.5 2;1.1;1.1 C+ 6+7

12704
Achim Schöneberg
 Einbeck
Rolf Wiehagen zum
75. Geburtstag gewidmet



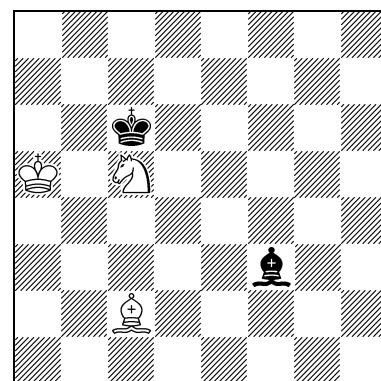
H#2.5 C+ 5+14
 b) ♖h7→♙h7

12705
Udo Degener
Mirko Degenkolbe
 Potsdam / Meerane



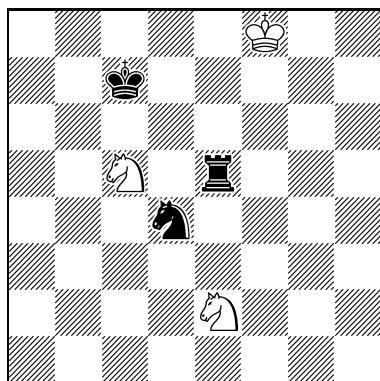
H#2.5 C+ 5+14
 Zero-position a) ♔g3→d3,
 b) ♜d2→e5, c) ♜d2→e1

12706
Dietmar Jahn
 Dresden



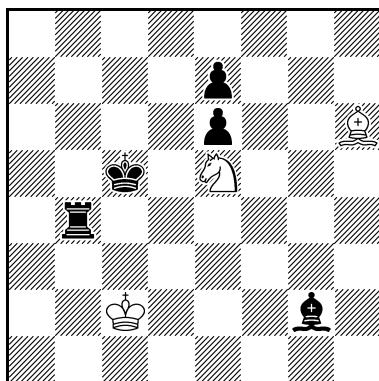
H#3 b) ♔a5→g6 C+ 3+2

12707
Dietmar Jahn
 Dresden



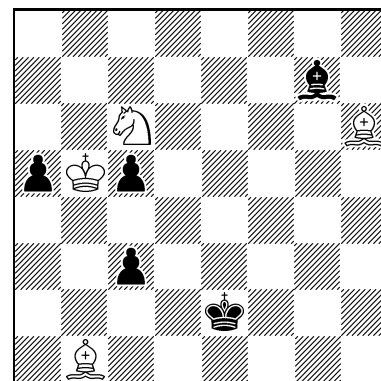
H#3 2.1;1.1;1.1 C+ 3+3

12708
Waleri N. Barsukow
 Sankt Petersburg



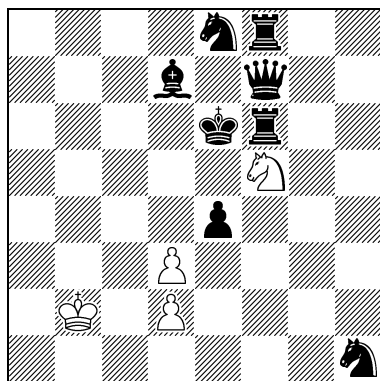
H#3 2.1;1.1;1.1 C+ 3+5

12709
Waleri N. Barsukow
 Sankt Petersburg



H#3 2.1;1.1;1.1 C+ 4+5

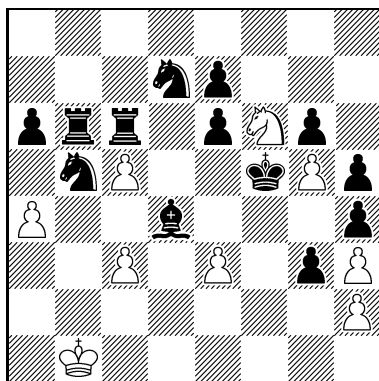
12710
Jozef Ložek
 Lukáčovce



H#3 C+ 4+8

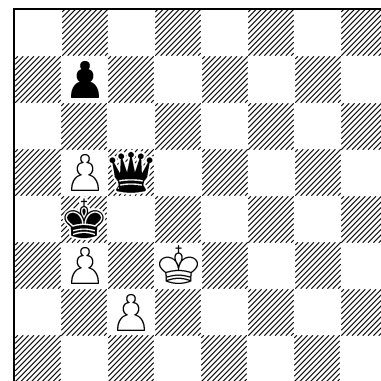
b) ♞h1→♘h1

12711
Abdelaziz Onkoud
 Stains



H#3 3.1;1.1;1.1 C+ 9+13

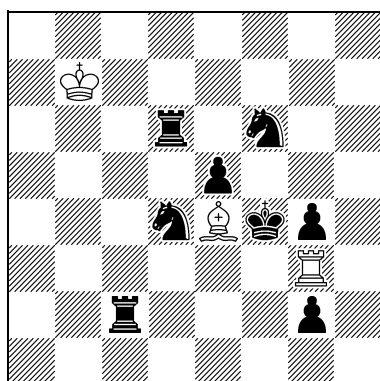
12712
Iwan Brjuchanow
 Tschaplinka



H#3.5 C+ 4+3

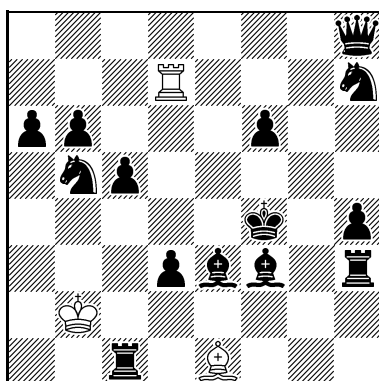
b) ♙b3→c4

12713
Raúl Jordan
 Jena
 (nach Mykola Kolesnik)



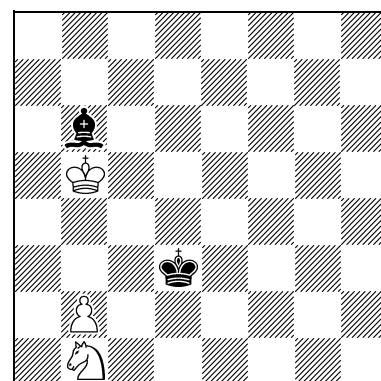
H#3.5 2 Lösungen C+ 3+8

12714
Raúl Jordan
 Jena
 (nach Mykola Kolesnik)



H#3.5 2 Lösungen C+ 3+14

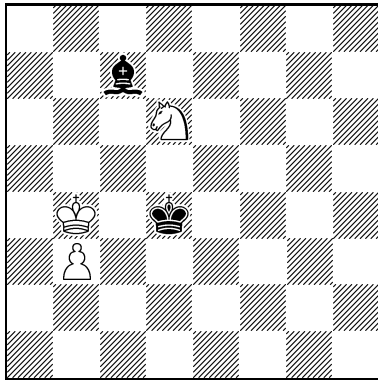
12715
Dietmar Jahn
 Dresden



H#4 C+ 3+2

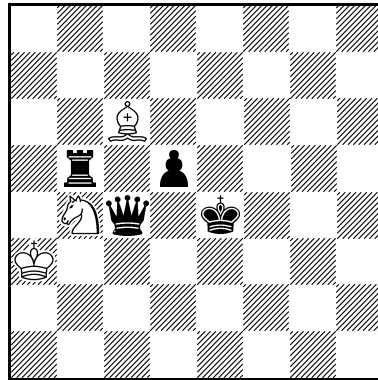
b) ♞b1↔♜b6

12716
Dietmar Jahn
 Dresden



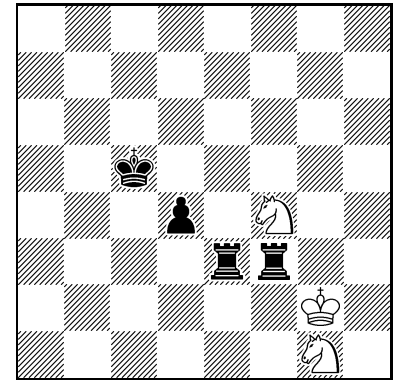
H#4 b) ♔c7→c6 C+ 3+2

12717
Iwan Brjuchanow
 Tschaplinka



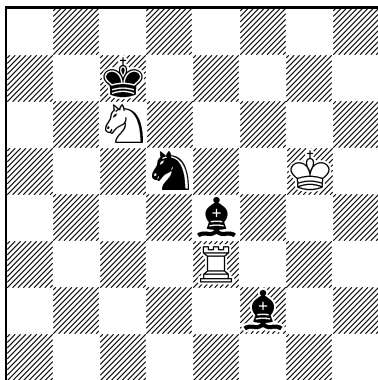
H#4 2.1;1.1... C+ 3+4

12718
Iwan Brjuchanow
 Tschaplinka



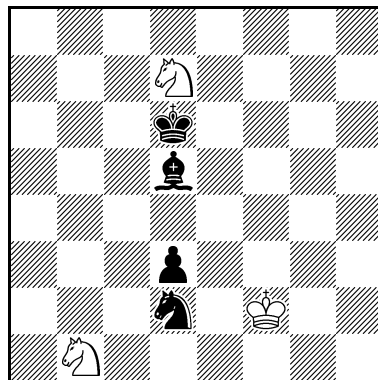
H#4 C+ 3+4
 b) ♖f4→♕f4, c) ♜d4→e5

12719
Dietmar Jahn
 Dresden
Neujahrsgruß



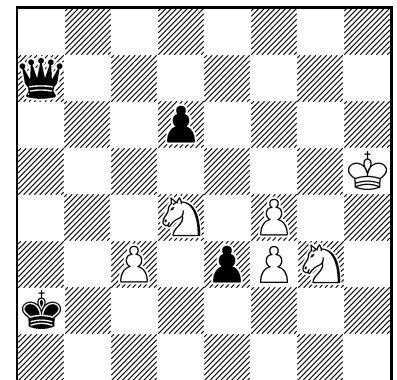
H#2 C+ 3+4
 b) ♖c6→a4: H#3,
 c) ♖e3→♖e3: H#4

12720
Iwan Brjuchanow
 Tschaplinka



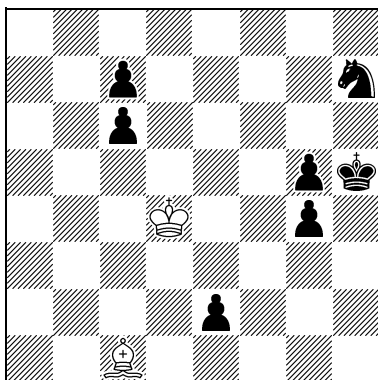
H#4 C+ 3+4
 b) ♜d3→♜d3

12721
Waleri N. Barsukow
 Sankt Petersburg



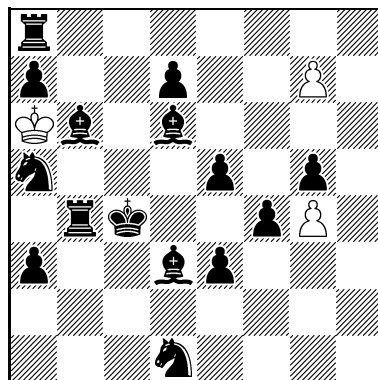
H#4 2.1;1.1... C+ 6+4

12722
Zlatko Mihajloski
 Skopje



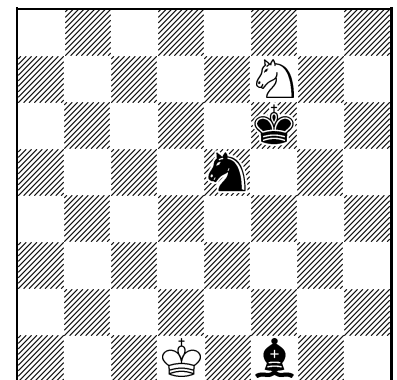
H#4.5 2;1.1... C+ 2+7

12723
Marko Ylijoki
 Tampere



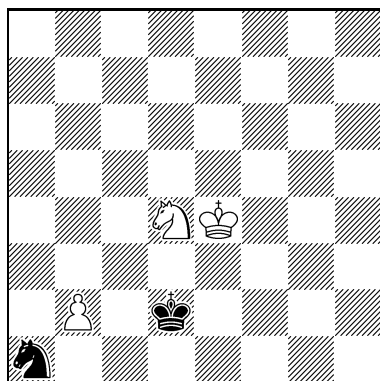
H#4.5 4;1.1... C+ 3+15

12724
Daniel Novomesky
 Bratislava



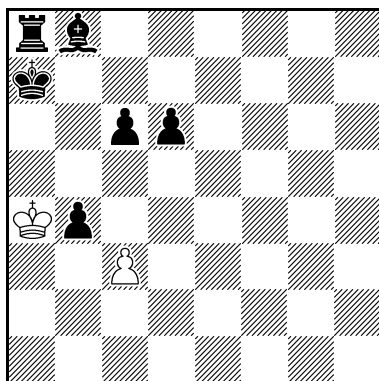
H#5 2.1;1.1... C+ 2+3

12725
Dietmar Jahn
Dresden



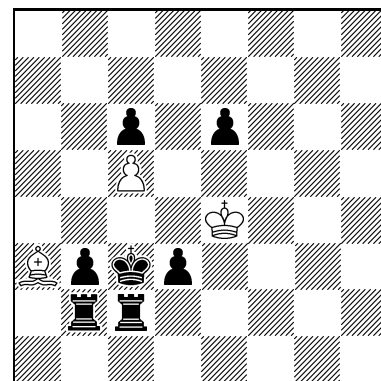
H#5 b) ♞a1→b7 C+ 3+2

12726
Waleri N. Barsukow
Sankt Petersburg



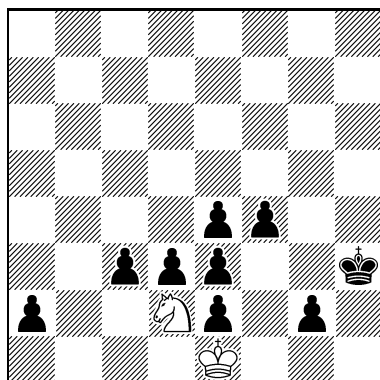
H#5 2.1;1.1... C+ 2+6

12727
Michal Dragoun
Praha



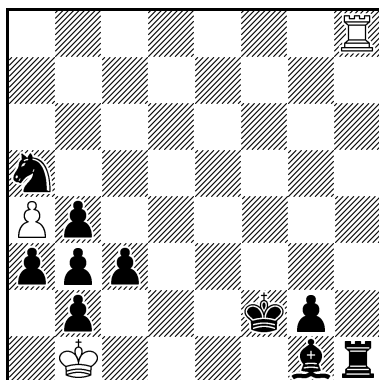
H#5 C+ 3+7

12728
Reinhardt Fiebig
Hohndorf (Sachsen)



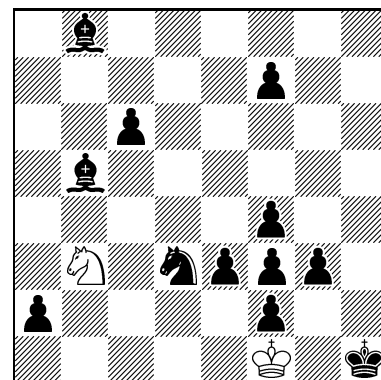
H#5 C+ 2+9

12729
Reinhardt Fiebig
Hohndorf (Sachsen)



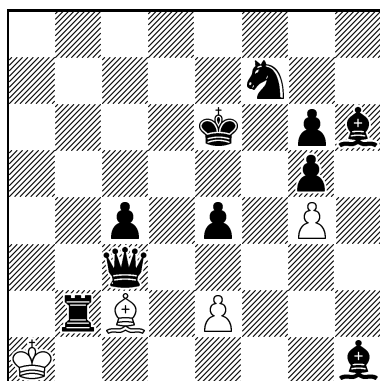
H#5 C+ 3+10

12730
Reinhardt Fiebig
Hohndorf (Sachsen)



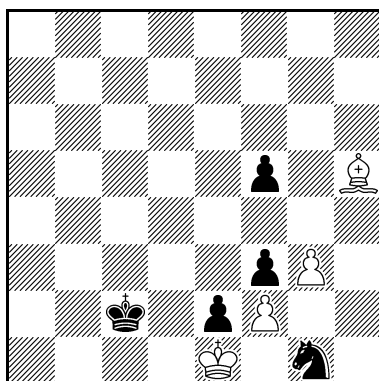
H#5 C+ 2+12

12731
Steven B. Dowd
Kostas Prentos
Birmingham / Albuquerque



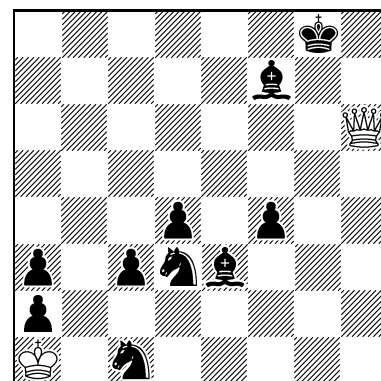
H#5 C+ 4+10

12732
Waleri N. Barsukow
Sankt Petersburg



H#5.5 2;1.1... C+ 4+5

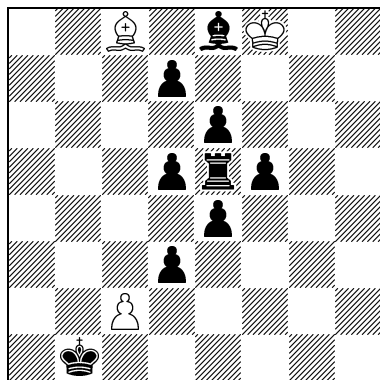
12733
Reinhardt Fiebig
Hohndorf (Sachsen)



H#5.5 C+ 2+10

12734

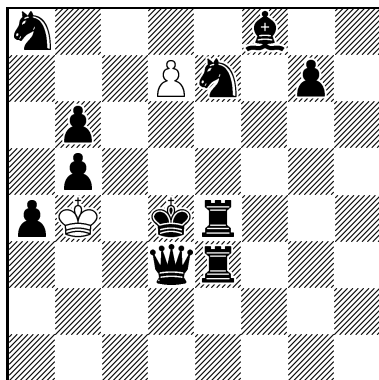
Rolf Wiehagen
Achim Schöneberg
Berlin / Einbeck
(nach Alexandr Bacharjew &
Rudolf Larin)



H#5.5vvv C+ 3+9

12735

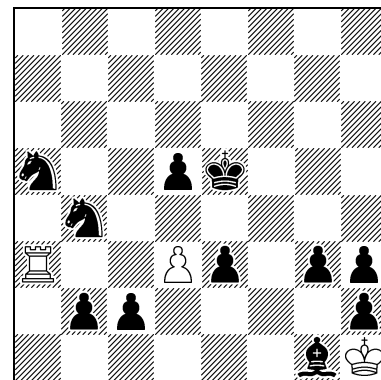
Marko Ylijoki
Tampere



H#5.5 2;1.1... C+ 2+11

12736

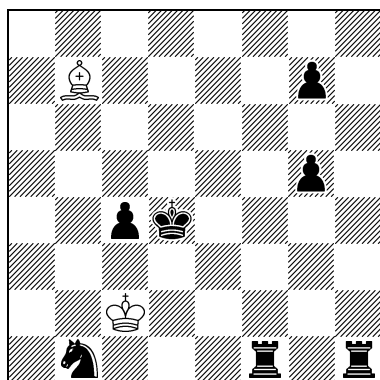
Robert Sharp
Wagga Wagga
Chris J. Feather zum
75. Geburtstag gewidmet



H#5.5 C+ 3+11

12737

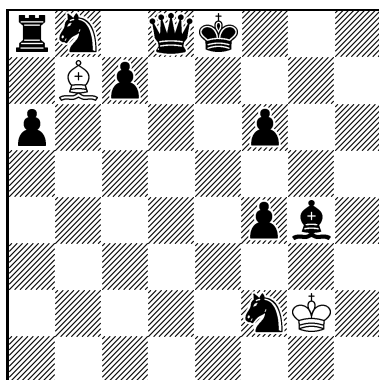
Reinhardt Fiebig
Hohndorf (Sachsen)



H#6 C+ 2+7

12738

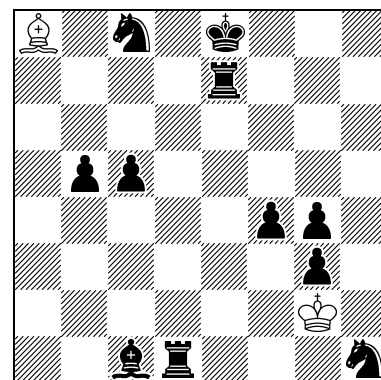
Zlatko Mihajloski
Skopje



H#6 C+ 2+10

12739

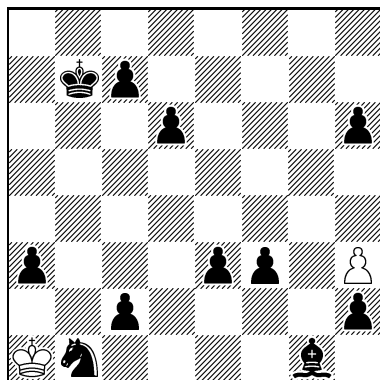
Reinhardt Fiebig
Hohndorf (Sachsen)



H#6 C+ 2+11

12740

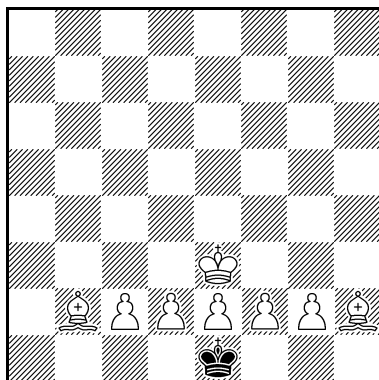
Reinhardt Fiebig
Hohndorf (Sachsen)



H#7 2.1;1.1... C+ 2+11

12741

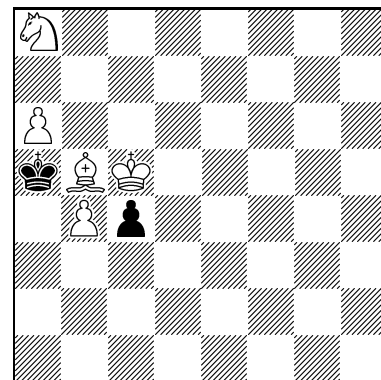
Bernd Schwarzkopf
Neuss



Ergänze einen wB auf
einem Feld der unteren
Breithälfte, so dass H#4
möglich ist. Wie viele
Lösungen?

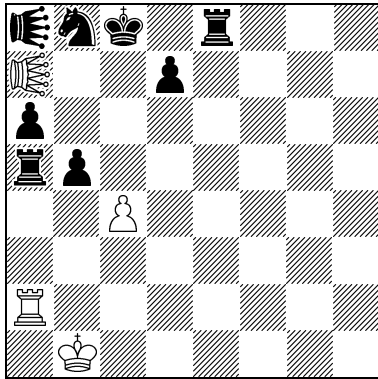
12742

Jean Lochet
Paul Wiereyn
Beaupuy / Amersfoort



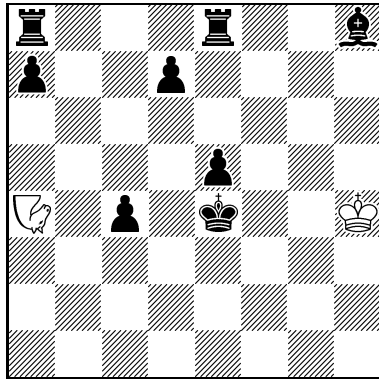
a) Ist Schwarz matt? 5+2
b) Welches waren die letzten
beiden Züge von Schwarz und
Weiß, so dass #3 möglich
war?
Circe

12743
Walter Lindenthal
 Großstelzendorf/Weinviertel



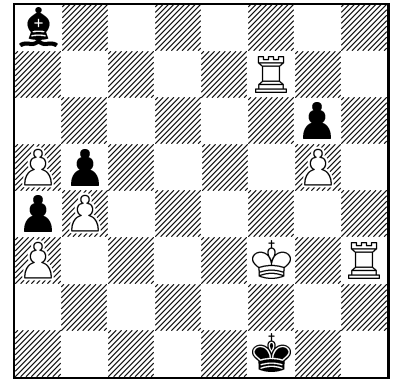
Füge einen sB auf einer 4+8
 legalen Position in der
 schwarzen Hälfte des Brettes
 derart ein, dass im nachfolgenden
 H#2 mit einer bikoloren Rochade mattgesetzt werden kann
 Madrasi Bauern exklusiv (Priorität), Make&Take-Schach, Circe ♖♗ = Doppelgrashüpfer

12744
Walter Lindenthal
 Großstelzendorf/Weinviertel



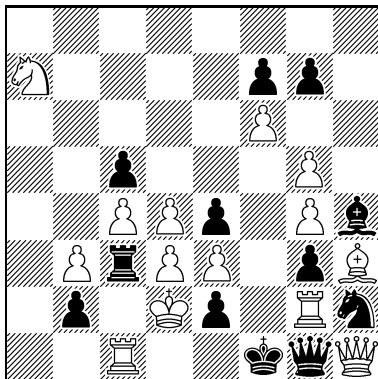
#2 2 Lösungen 2+8
 Schach-960,
 Make&Take-Schach, r[T/3+]

12745
Jean Lochet
 Beaupuy
 Paul Wiereyn gewidmet



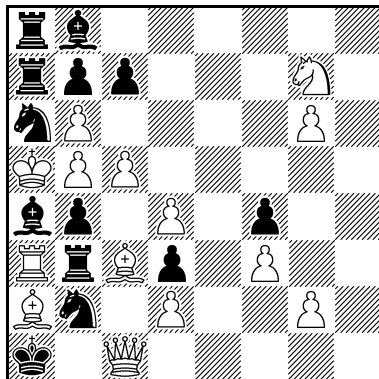
#3 b) ♖h3→g8, 7+5
 c) ♖h3→a6
 Circe

12746
Gerald Ettl
 Meitingen



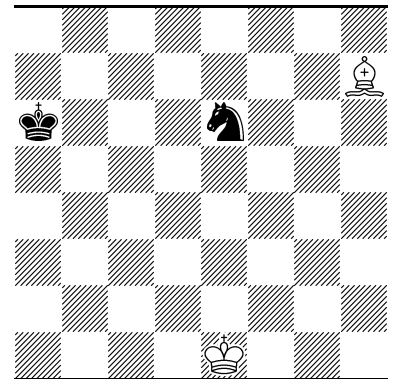
Letzte 14+12
 18 Einzelzüge?

12747
Gerald Ettl
 Meitingen



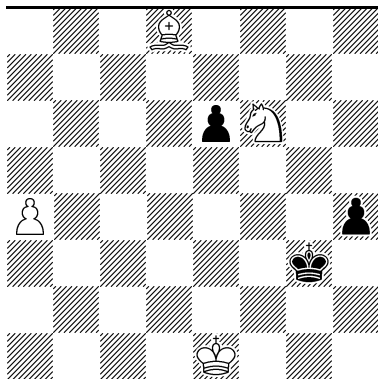
Letzte 14+13
 19 Einzelzüge?

12748
Paul Răican
 Tulcea



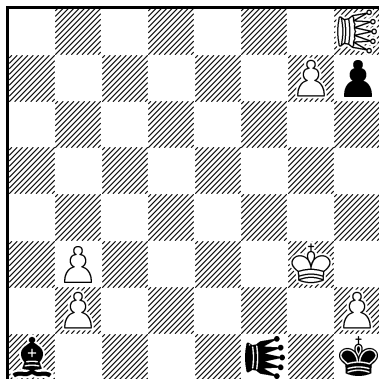
-14 & #1 VRZ Proca 2+2
 Anticirce, Vertikalzylinder

12749
Paul Răican
 Tulcea



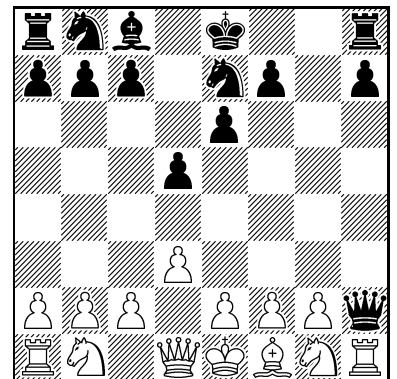
-19 & #1 Proca VRZ 4+3
 Anticirce, Vertikalzylinder

12750
Andreas Thoma
Klaus Wenda
 Groß Rönnau / Wien



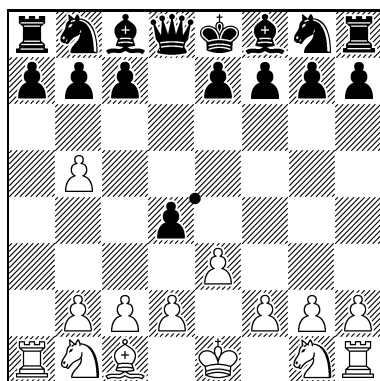
-34 & #1 VRZ Proca 6+4
 Anticirce, Circe, Nullzüge erlaubt
 ♗♘ = Heuschrecke

12751
Paul Răican
 Tulcea



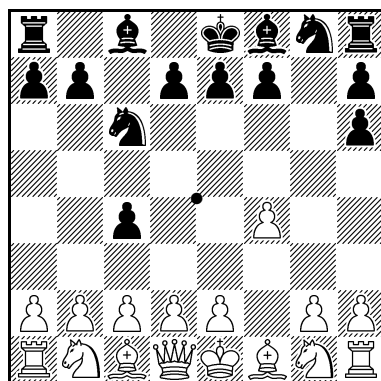
BP 6.5 C+ 14+14
 Kobulkönige

12752
Gregor Werner
 Worms



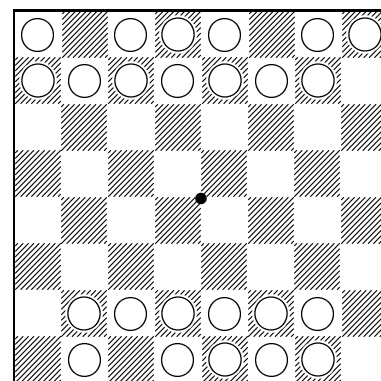
BP 6.5 C+ 14+16
 #C Chess, Punktspiegelung

12753
Gregor Werner
 Worms



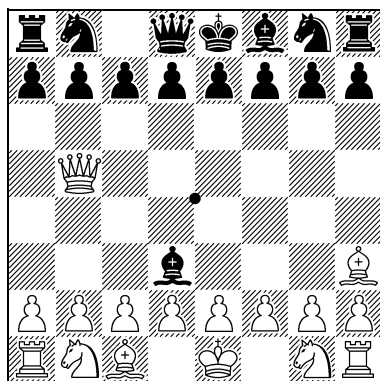
BP 6.5 C+ 16+15
 #C Chess, Punktspiegelung

12754
Gregor Werner
 Worms



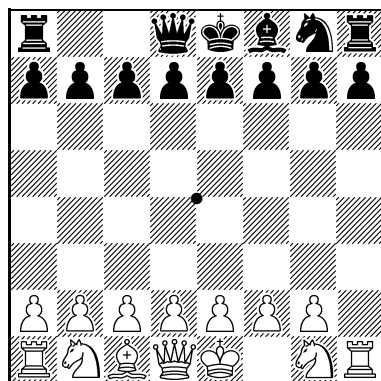
BP 7, danach #1 C+
 Punktspiegelung
 24 unbestimmte Steine

12755
Gregor Werner
 Worms



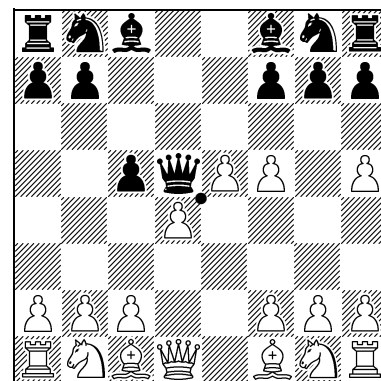
BP 7 C+ 16+16
 Punktspiegelung

12756
Gregor Werner
 Worms



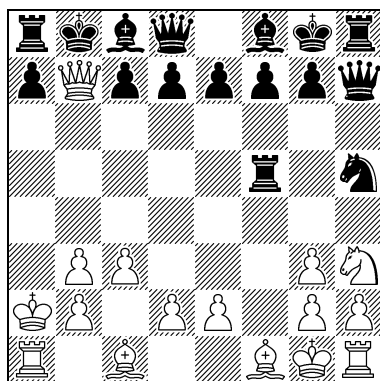
BP 7.5 C+ 14+14
 Punktspiegelung

12757
Gregor Werner
 Worms



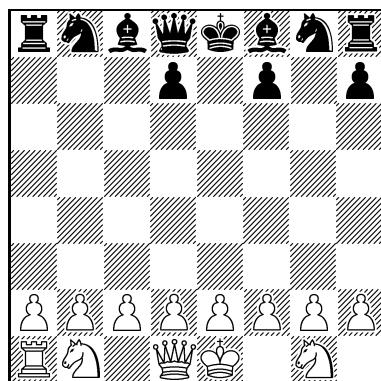
Ergänze die Könige 17+13
 zu BP 8.5 mit #
 #C Chess, Punktspiegelung

12758
Paul Răican
 Tulcea



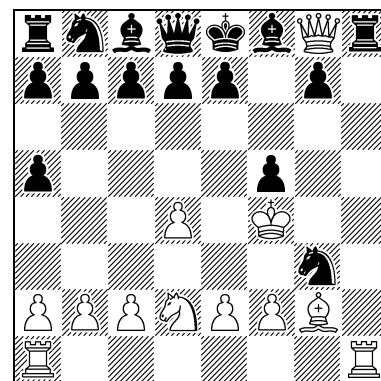
BP 9.5 C+ 16+16
 Knightmate, PWC

12759
Michel Caillaud
 Chatenay-Malabry



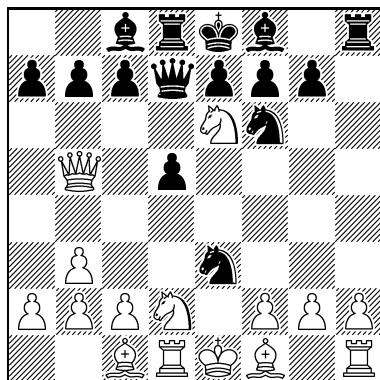
BP 11 13+11
 Take&Make-Schach

12760
Kevin Begley
Kostas Prentos
 Elk Grove / Albuquerque



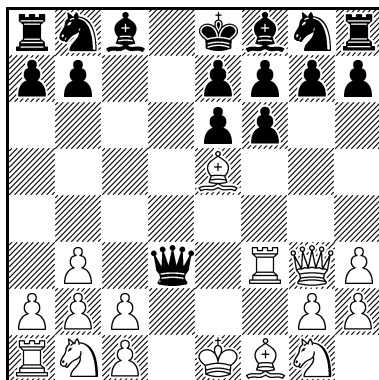
BP 11 12+16
 Kontraparraincirce

12761
Kostas Prentos
Kevin Begley
 Albuquerque / Elk Grove



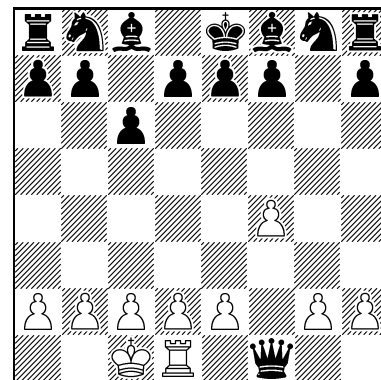
BP 11 15+15
 Kontraparraincirce

12762
Kevin Begley
Kostas Prentos
 Elk Grove / Albuquerque



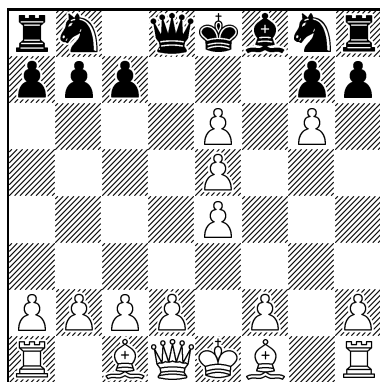
BP 11 16+16
 Kontraparraincirce

12763
Rolf Kohring
 Tuntenhausen



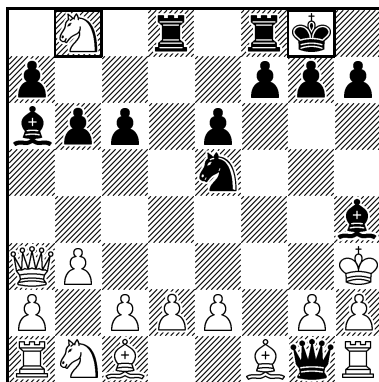
BP 12 C+ 10+15

12764
Gregor Werner
 Worms



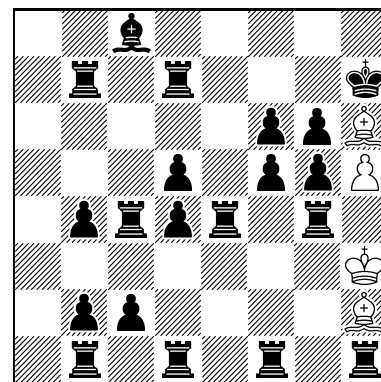
BP 12 16+12
 #C Chess

12765
Dirk Borst
 Groningen
 Pita gewidmet



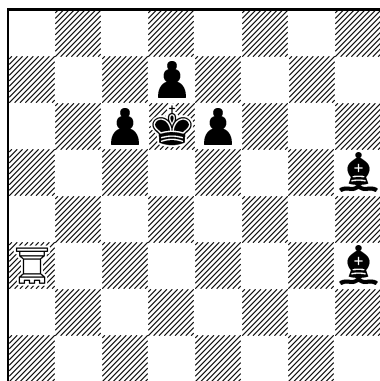
BP 16 15+14
 Circe rex inclusiv,
 schwarzer MaxDister b8, g8
 eingerahmt: Bezugssteine

12766
Norm Trigoboff
 Ithaca



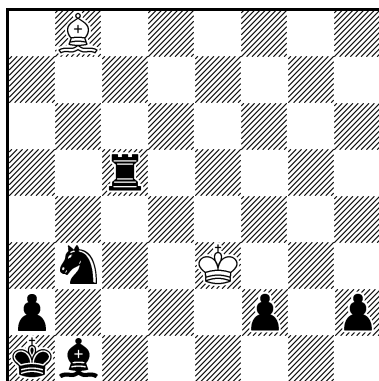
Ser.#39 C+ 4+20

12767
Sébastien Luce
 Montreuil



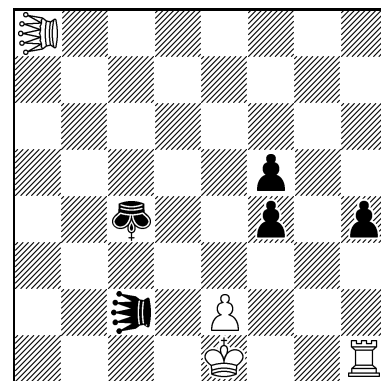
Ser.#73 C+ 1+6
 PWC
 ♖ = Wesir

12768
Kurt Ewald
 Starnberg



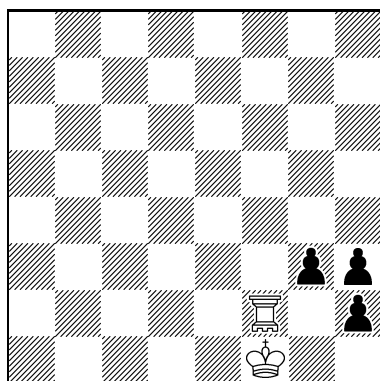
Ser.S#8 C+ 2+7
 b) ♜h2→h4
 PWC

12769
Johan Beije
 Almere



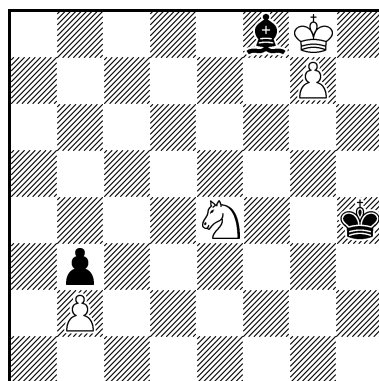
p(H)Ser.S#8 C+ 4+5
 Vogtländer Schach
 ♔ = königlicher Turm
 ♖♗ = Grashüpfer-2

12770
Sébastien Luce
 Montreuil



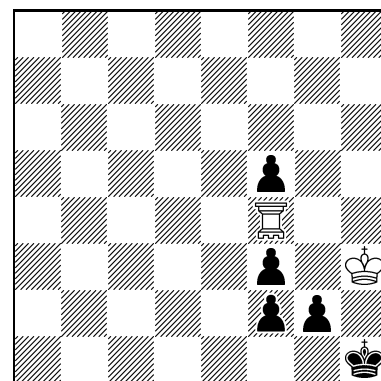
Ser.S#11 C+ 2+3
 PWC
 ♖ = Wesir

12771
L'uboš Kekely
 Snežnica



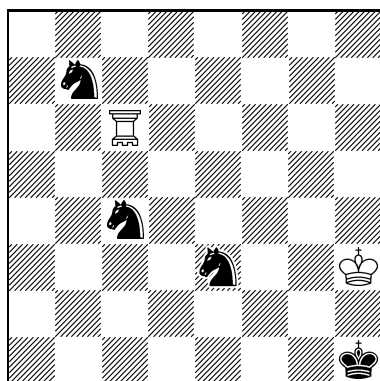
pSer.S#12 C+ 4+3

12772
Sébastien Luce
 Montreuil



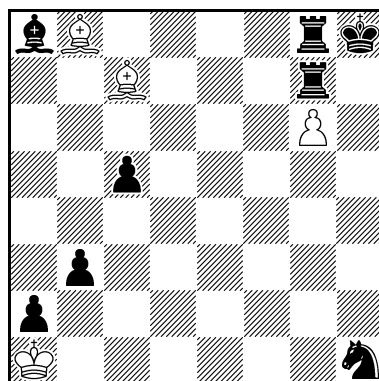
Ser.S#17 C+ 2+5
 PWC
 ♖ = Wesir

12773
Sébastien Luce
 Montreuil



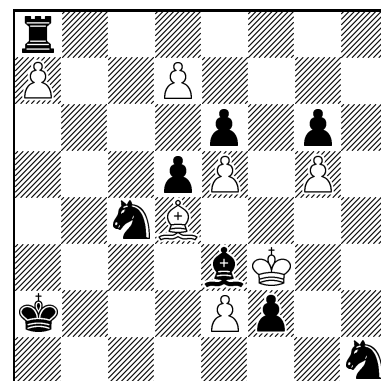
Ser.S#23 C+ 2+4
 Equipollentscirce
 ♖ = Wesir

12774
Norm Trigoboff
 Ithaca



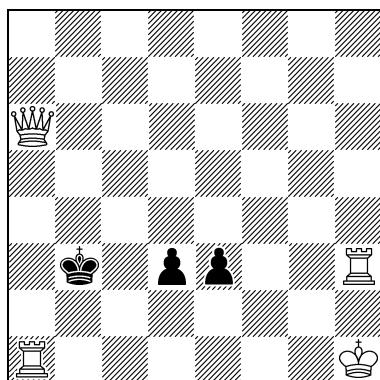
Ser.S#25 C+ 4+8

12775
Paul Răican
 Tulcea



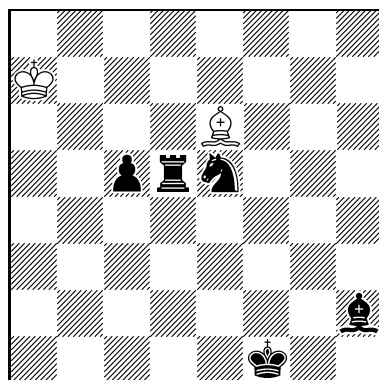
Ser.S#25 7+9

12776
Frank Fiedler
 Mügeln



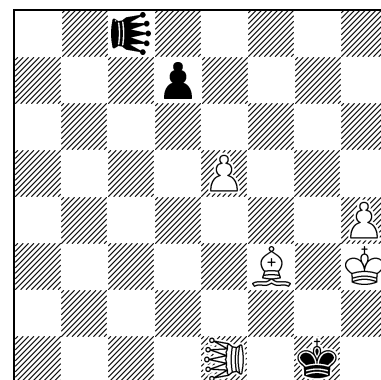
Ser.H#6 auf C+ 4+3
 Mattfeld b3 2 Lösungen

12777
Kurt Ewald
 Starnberg



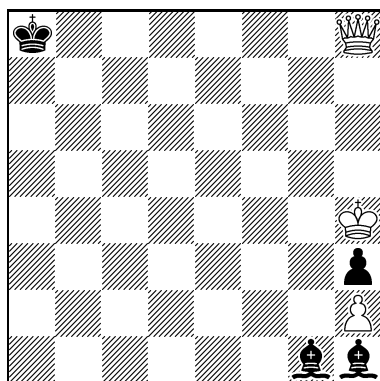
Ser.H#9 C+ 2+5

12778
L'uboš Kekely
 Snežnica



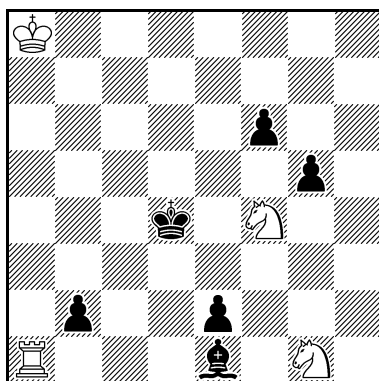
Ser.H#9 C+ 5+3
 Bicolores
 ♖ = Grashüpfer-2
 ♗ = Grashüpfer-3

12779
Norm Trigoboff
 Ithaca



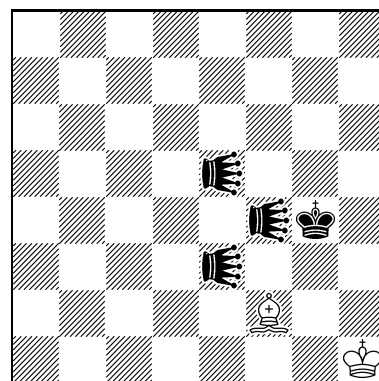
Ser.H#10 C+ 3+4

12780
Rolf Kohring
 Tuntenhausen



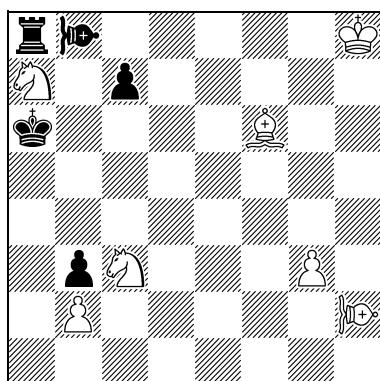
Ser.H#24 C+ 4+6
 ABC

12781
Sébastien Luce
 Montreuil



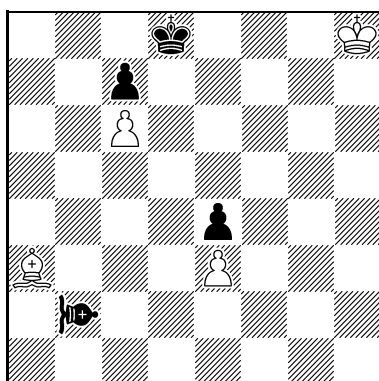
Ser.HS#9 C+ 2+4
 (9 schwarze Serienhilfszüge,
 dann S#1) b) ♖e3→e2
 ♖ = Kontragrashüpfer

12782
L'uboš Kekely
 Snežnica



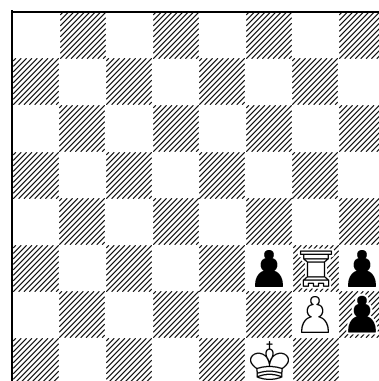
Ser.HS#13 C+ 7+5
 (13 schwarze Serienhilfszüge,
 dann S#1)
 ♖♗ = Vao

12783
L'uboš Kekely
 Snežnica



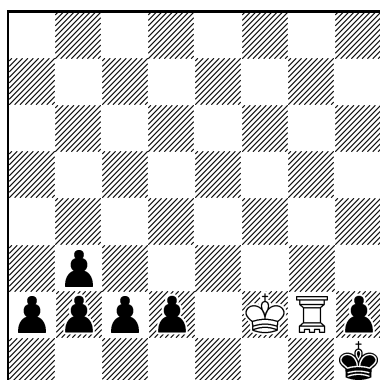
pSer.HS#15 C+ 4+4
 (15 schwarze Serienhilfszüge,
 dann S#1)
 Bicolores,
 transmutierende Könige
 ♖♗ = Nachreiterhüpfer

12784
Sébastien Luce
 Montreuil



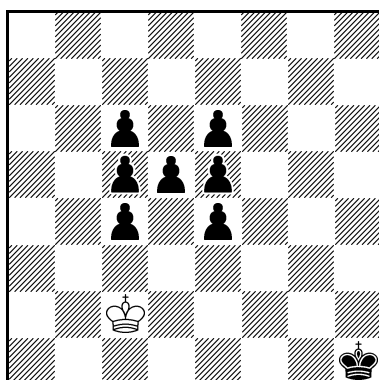
Ser.HS#22 C+ 3+3
 (22 schwarze Serienhilfszüge,
 dann S#1)
 Equipollentsirce
 ♖ = Wesir

12785
Sébastien Luce
 Montreuil



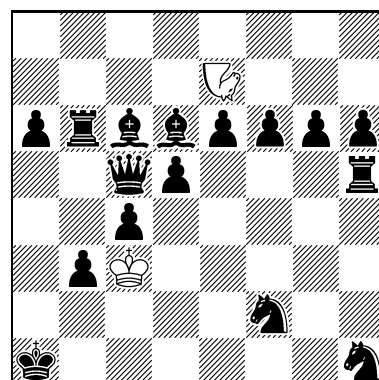
Ser.=18 C+ 2+7
 PWC ♖ = Wesir

12786
Sébastien Luce
 Montreuil
Hans Gruber gewidmet



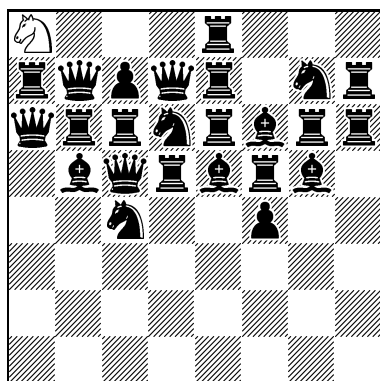
Ser.=21 C+ 1+8
 Equipollentsirce

12787
Horst Bäcker
 Eschborn



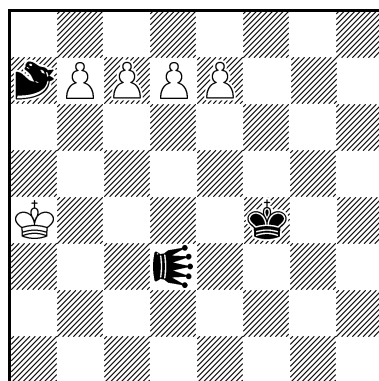
Ser.=30 2+16
 Circe

12788
Horst Bäcker
 Eschborn



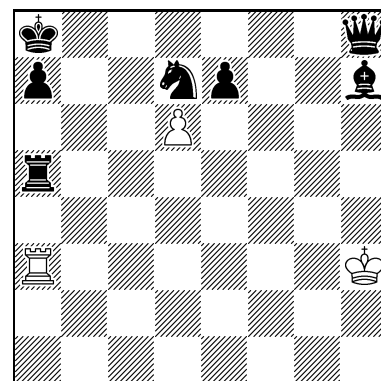
Ser.=32 1+24
 b) ♖a8→h8
 Circe

12789
Manfred Rittirsch
 Buch am Erlbach



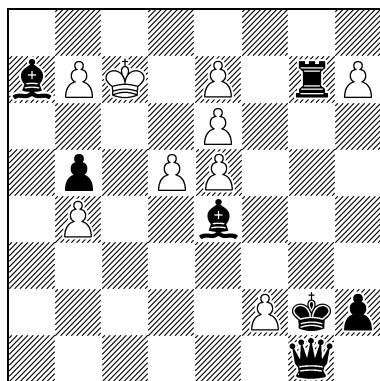
Ser.S=7 C+ 5+3
 Argentinisches Schach
 ♖ = Señora
 ♗ = Saltador

12790
L'uboš Kekely
 Snežnica



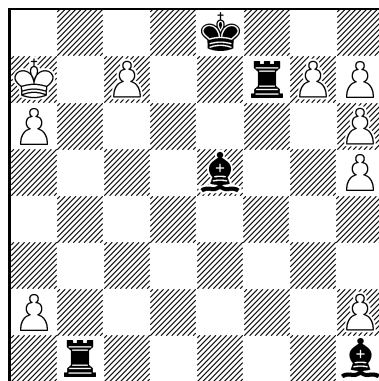
Ser.S=16 C+ 3+7

12791
George P. Sphicas
 Walnut Creek



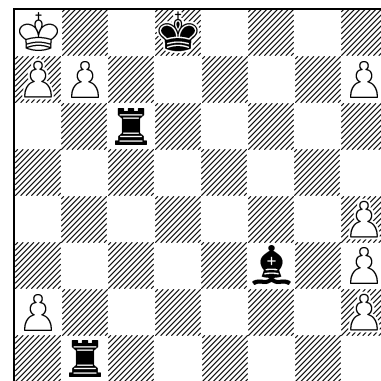
Ser.S=26 9+7

12792
George P. Sphicas
 Walnut Creek



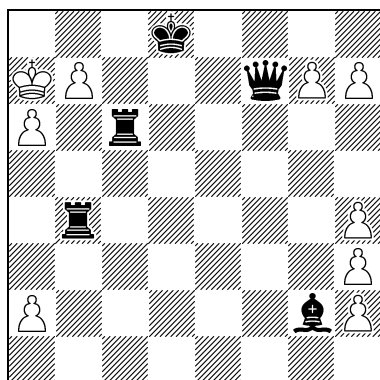
Ser.S=31 9+5

12793
George P. Sphicas
 Walnut Creek



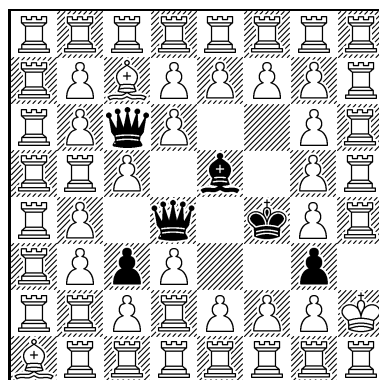
Ser.S=34 8+4

12794
George P. Sphicas
 Walnut Creek



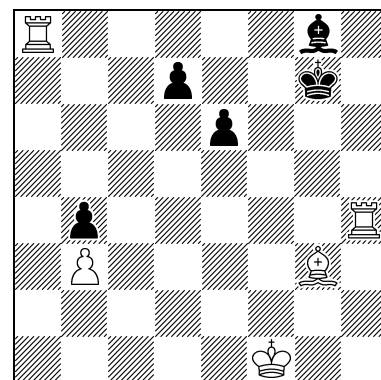
Ser.S=35 9+5

12795
Norm Trigoboff
 Ithaca



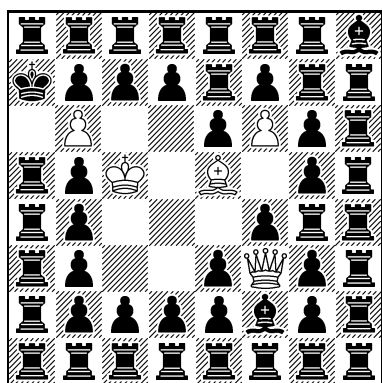
Ser.S=582 49+6

12796
Waleri N. Barsukow
 Sankt Petersburg



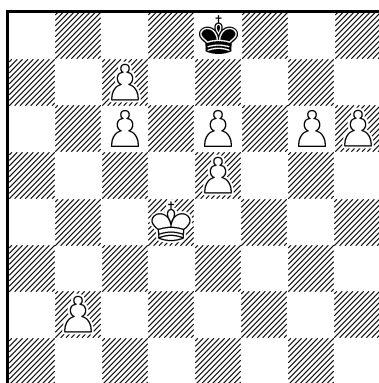
Ser.H=15 C+ 5+5

12797
Norm Trigoboff
Ithaca



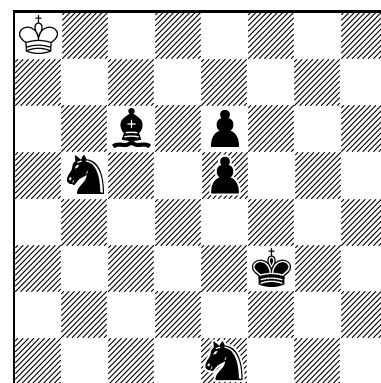
Ser.H=582 5+49

12798
Ya'aqov Mintz
Jerusalem



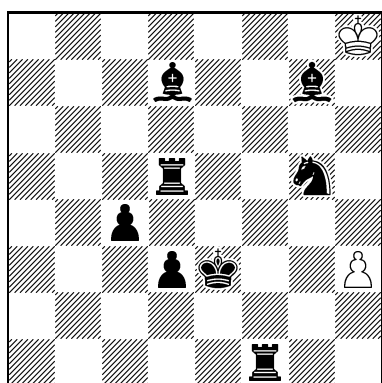
Ser.!=25 8+1

12799
Branko Koludrović
Zagreb



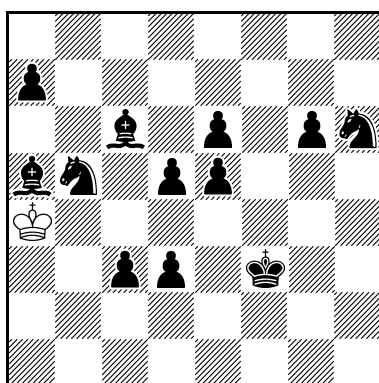
Ser.!=52 C+ 1+6
Circe

12800
Branko Koludrović
Zagreb



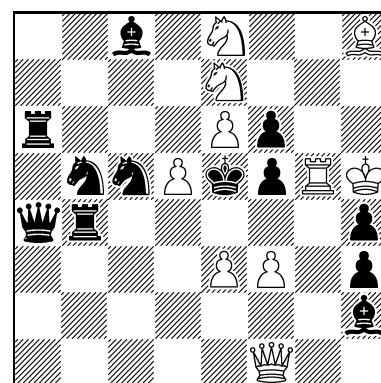
Ser.!=79 2+8
Circe

12801
Branko Koludrović
Zagreb



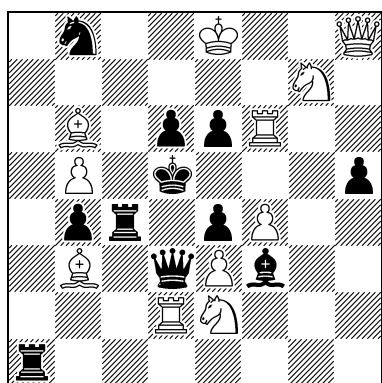
Ser.!=82 C+ 1+12
Circe

12802
Hubert Gockel
Neckartenzlingen



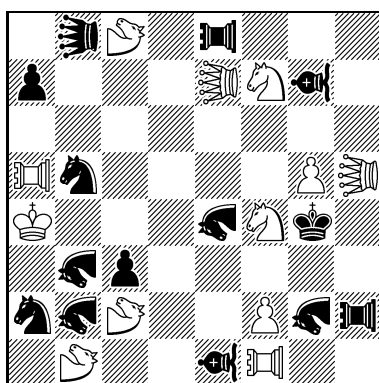
#2vv C+ 10+12
Breton

12803
Hubert Gockel
Neckartenzlingen



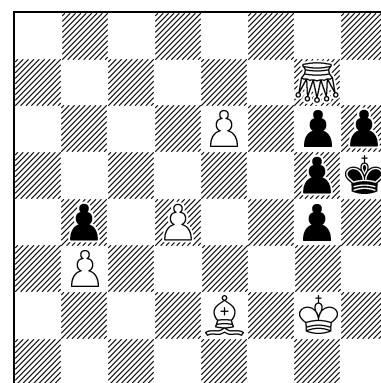
#2v C+ 11+11
Breton adverse

12804
Jean-Marc Loustau
Puteaux



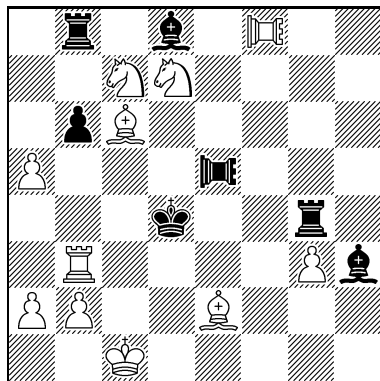
#2*vvv(v) C+ 12+14
♙♚ = Lion ♖♗ = Turmlion
♘ = Läuferlion ♛ = Rosenlion
♞ = Nachtreiterlion

12805
Gerald Ettl
Meitingen



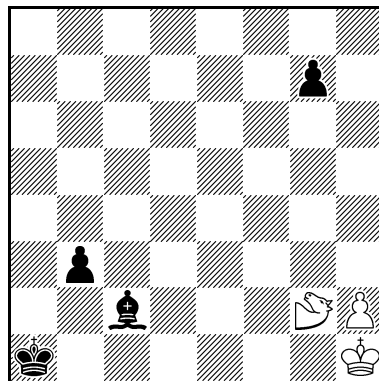
#3 C+ 6+6

12806
Hemmo Axt
 Frasdorf



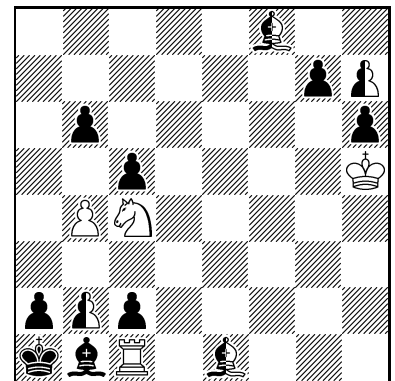
#3 11+7
 ♖♜ = Verwallstein T/L Typ 2

12807
Frank Fiedler
 Mügeln



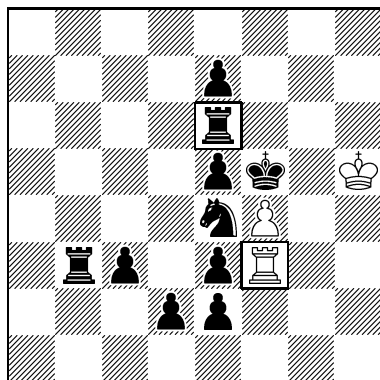
#7 C+ 3+4
 ♘ = Ubi-Ubi

12808
Gerald Ettl
 Meitingen



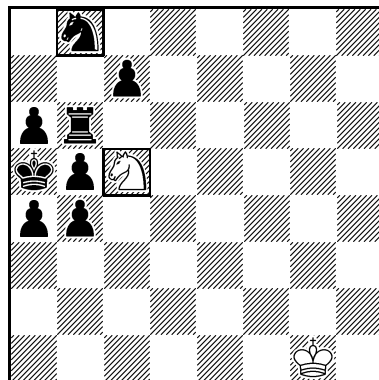
#7 C+ 4+8+4

12809
Ralf Krätschmer
 Neckargemünd



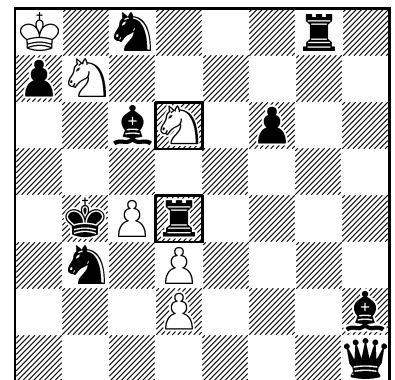
#10 C+ 3+10
 schwarzer MinDister e6, f3
 eingerahmt: Bezugssteine

12810
Dieter Werner
 Dübendorf
Andreas Thoma gewidmet



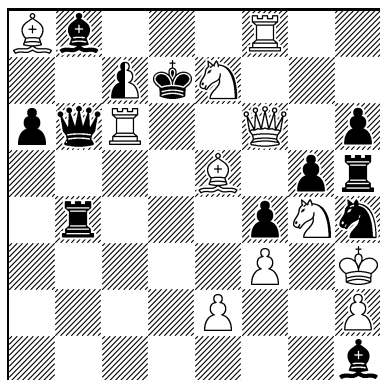
#11 C+ 2+8
 schwarzer MinDister b8, c5
 eingerahmt: Bezugssteine

12811
Kjell Widlert
 Stockholm



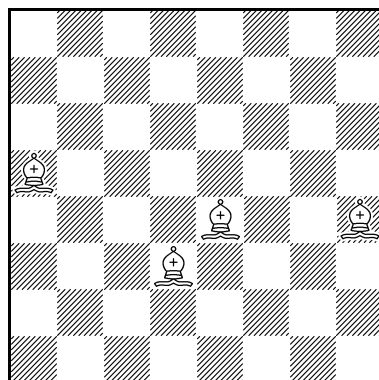
#11 C+ 6+10
 schwarzer MinDister d4, d6
 eingerahmt: Bezugssteine

12812
Gerald Ettl
 Meitingen



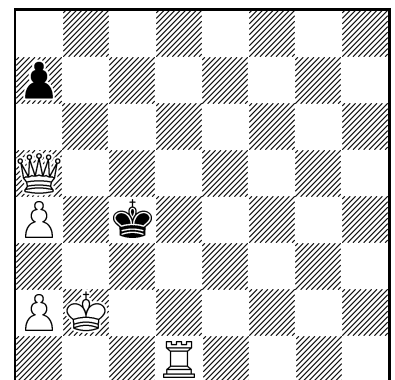
S#2 C+ 11+11+1
 Circe

12813
Andreas Thoma
 Groß Rönnau



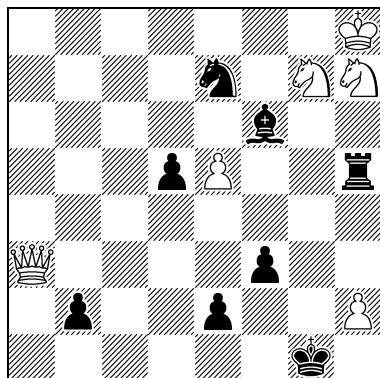
S#4 C+ 4+0
 Längstzuger, Wandelschach

12814
Iwan Brjuchanow
 Tschaplinka



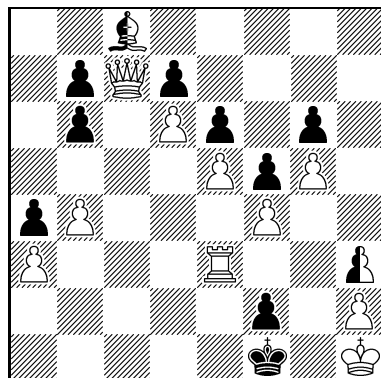
S#4 a) orthodox, C+ 5+2
 b) Masand

12815
Vladislav Buňka
Armin Geister
 Kutná Hora / Berlin



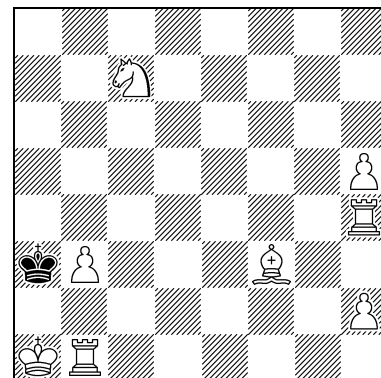
S#4 2 Lösungen C+ 6+8
 Längstzuger

12816
Gerald Ettl
 Meitingen



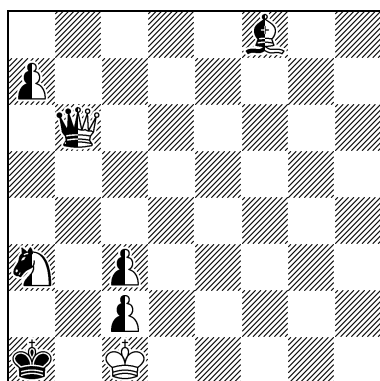
S#5 C+ 10+9+2

12817
Iwan Brjuchanow
 Tschaplinka
Anna Prohaska gewidmet



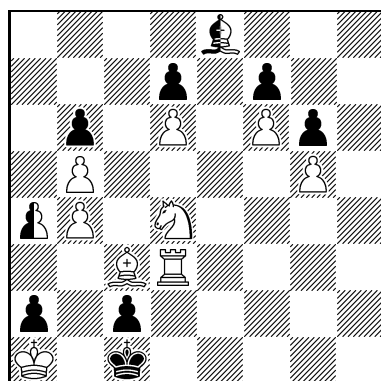
S#6 C+ 8+1
 b) ♖c7→a7: S#5
 Masand

12818
Gerald Ettl
 Meitingen



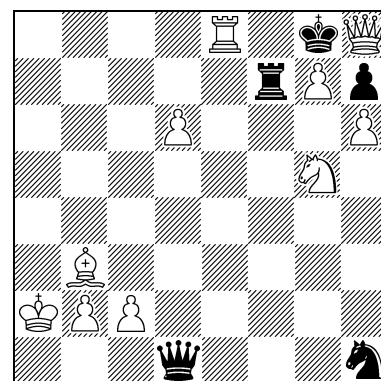
S#7 C+ 1+1+6
 ABC

12819
Gerald Ettl
 Meitingen



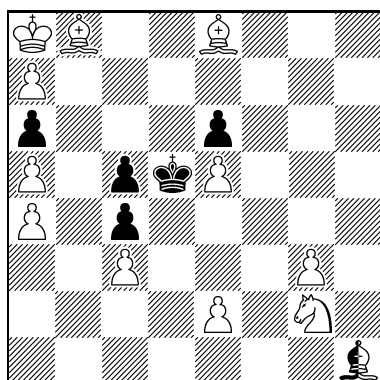
S#7* C+ 9+7+2

12820
Rolf Kohring
 Tuntenhausen



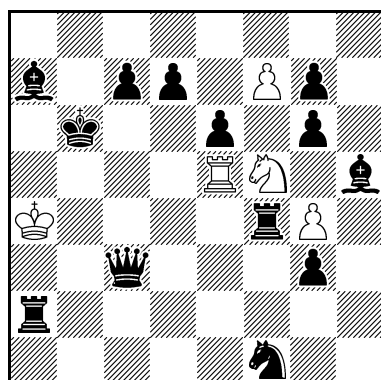
S#8 C+ 10+5
 Anticirce

12821
Gerald Ettl
 Meitingen



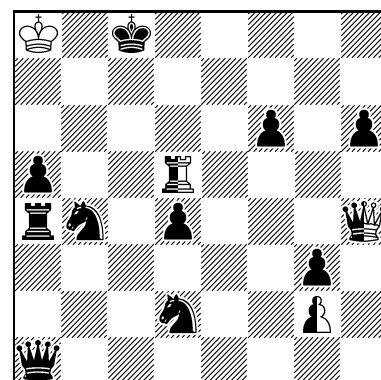
S#8* C+ 11+5+1

12822
Marcel Tribowski
Sven Trommler
 Berlin / Dresden



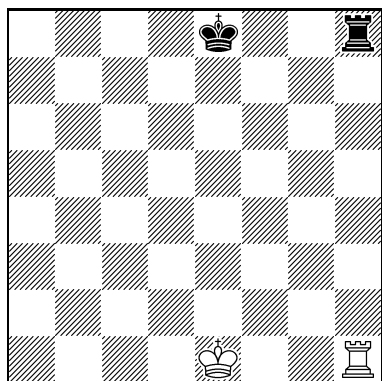
S#10 C+ 5+13
 Beamtenschach

12823
Gerald Ettl
 Meitingen



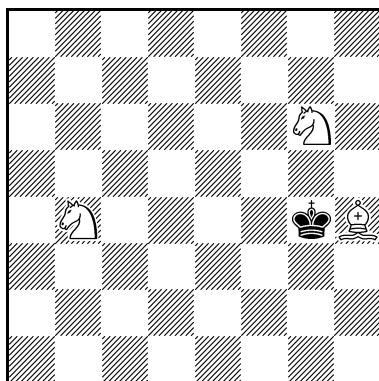
Semi-R#2 C+ 1+10+3

12824
Frank Fiedler
 Mügeln



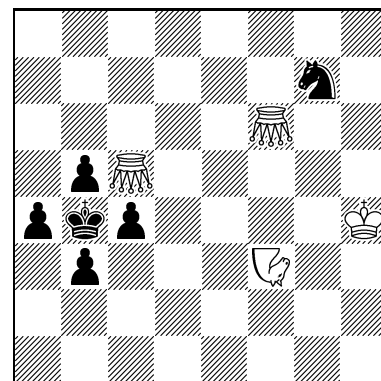
R#7 C+ 2+2
 Circe, Längstzuger

12825
Andreas Thoma
 Groß Rönnau



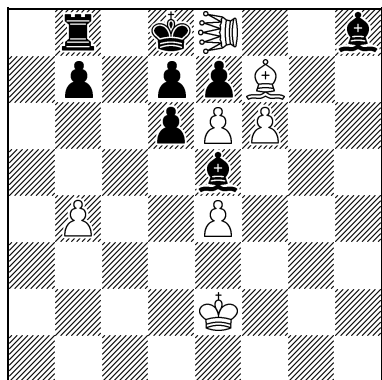
Rochade in 5 3+1
 b) ♔g4→a7
 Längstzuger, Wandelschach

12826
Frank Fiedler
 Mügeln



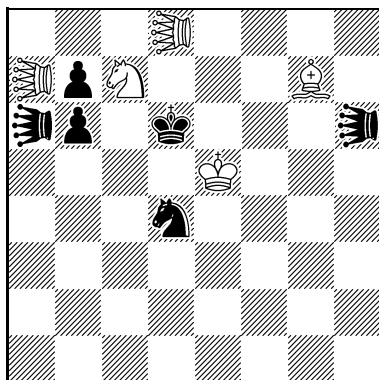
H#2* C+ 4+6

12827
Walter Lindenthal
 Großstelzendorf/Weinviertel



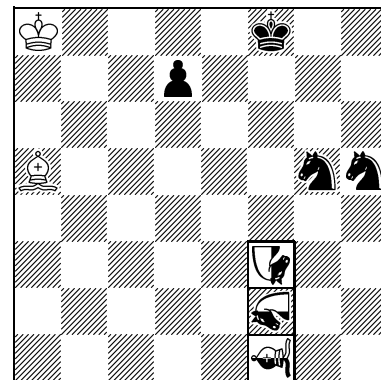
H#1⁵/₈ b) ♖b4→c5 7+8
 Make&Take-Schach,
 Strict Circe (Priorität),
 Strict Anticirce. Hinweis: Ein
 Schlagzug mit beidseitigen
 Wiedergeburten besteht unter
 Make&Take-Schach aus
 4 Teilen.
 ♖♗ = Mulehopper

12828
Walter Lindenthal
 Großstelzendorf/Weinviertel



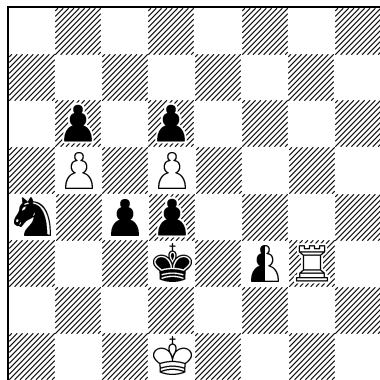
H#1²/₃ b) ♔d6→c4: 5+6
 Wäre diese Stellung (unter
 den bezeichneten
 Bedingungen und einer
 Forderung H#²/₃) legal?
 c) ferner + ♖d2: Ändert dies
 etwas an der Beurteilung der
 Legalität? d) ferner + ♗b3:
 Wäre diese Stellung (unter
 den bezeichneten
 Bedingungen) auch bei einer
 Forderung #²/₃ legal?
 Strict Circe (Priorität),
 Take&Make-Schach. Hinweis:
 Ein Schlagzug mit
 Wiedergeburt besteht unter
 Take&Make-Schach aus
 3 Teilen.
 ♖♗ = Mulehopper

12829
Franz Pacht
 Ludwigshafen



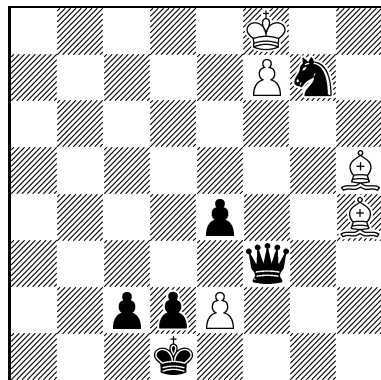
H#2 C+ 2+4+3
 b) ♞g5→♞g5,
 c) ♞g5→♞g5
 Take&Make-Schach
 ♞ = Giraffe
 ♞ = Camel
 eingerahmt: halbneutrale
 Steine

12830
Gerald Ettl
 Meitingen
 (nach Daniel de Irezabal)



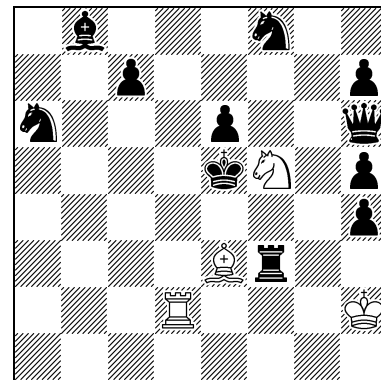
H#2 C+ 4+6+1
 b) ♖a4→♘a4,
 c) ♖a4→♙a4

12831
Gerald Ettl
 Meitingen



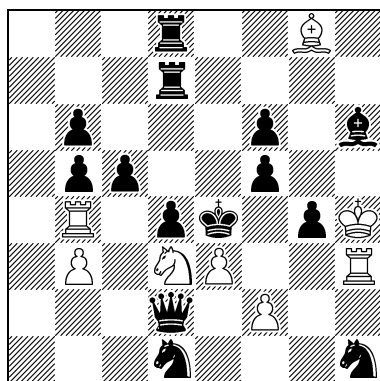
H#2 C+ 5+6
 b) ♖e2→♙e2,
 c) ♖e2→♞e2

12832
Pierre Tritten
 Pézilla la Rivière



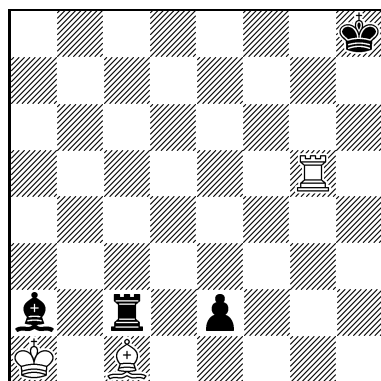
H#2 3.1;1.1 C+ 4+11
 Take&Make-Schach

12833
Gerald Ettl
 Meitingen



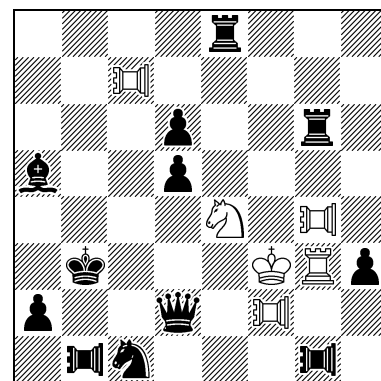
H#2 C+ 8+14
 b) ♖e3→♙e3,
 c) ♖e3→♞e3

12834
Sébastien Luce
 Montreuil



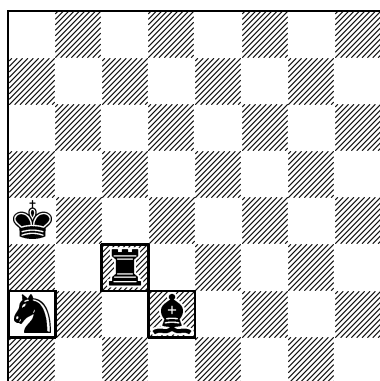
H#2.5 Duplex C+ 3+4
 Philophagensteine

12835
Michal Dragoun
 Praha



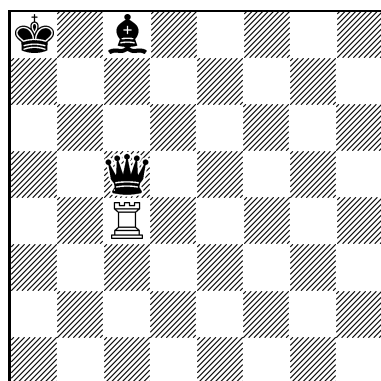
H#2.5 3;1.1;1.1 C+ 6+12
 ♖♞ = Camelreiter

12836
Sébastien Luce
 Montreuil
 Claus Gruppen gewidmet



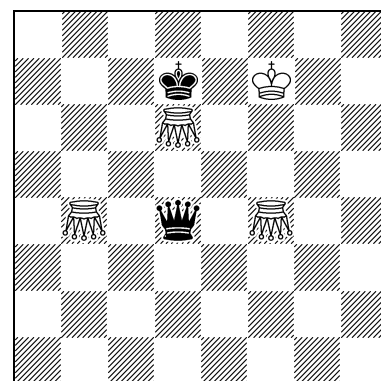
H#3 b) ♔a4→g1 C+ 0+4
 eingerahmt:
 Astrologen-Steine

12837
Sébastien Luce
 Montreuil



H#3.5 C+ 1+3
 b) ♔a8→d8
 Philophagensteine

12838
Sébastien Luce
 Montreuil



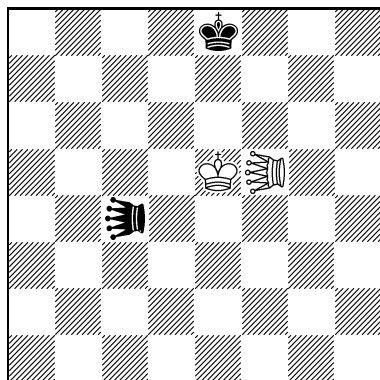
H#3.5 2;1.1... C+ 4+2

12839

Sébastien Luce

Montreuil

Hans Gruber & Erich Bartel
gewidmet

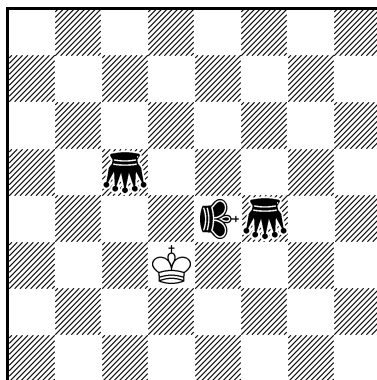


H#4 2.1;1.1... C+ 2+2
♞♞ = Kontragrashüpfer

12840

Václav Kotěšovec

Praha

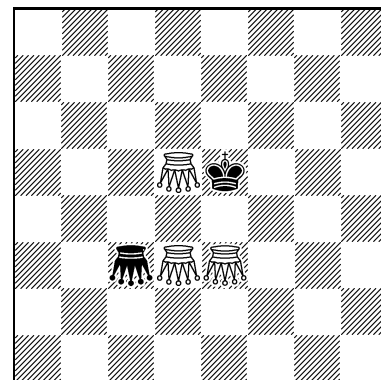


H#5 4.1;1.1... C+ 1+3
♞ = königliches Zebra

12841

Sébastien Luce

Montreuil

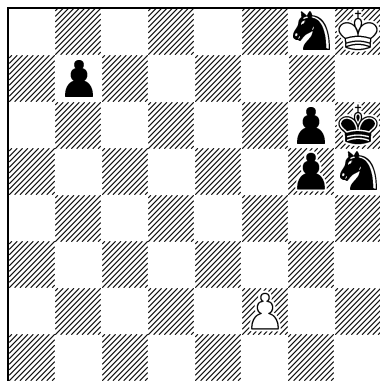


H#5 2.1;1.1... C+ 3+2
Philophagensteine

12842

Gunter Jordan

Jena

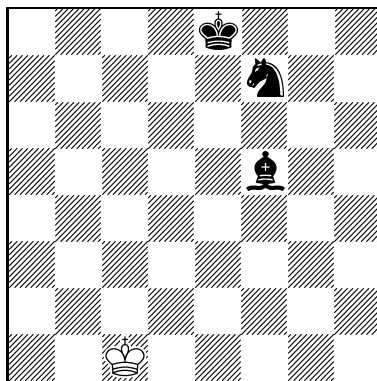


H#5 C+ 2+6
Breton adverse

12843

Iwan Brjuchanow

Tschaplinka

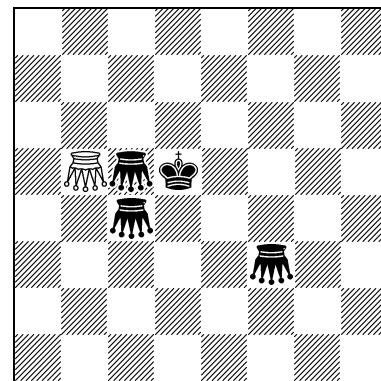


H#6 C+ 1+3
Masand

12844

Sébastien Luce

Montreuil

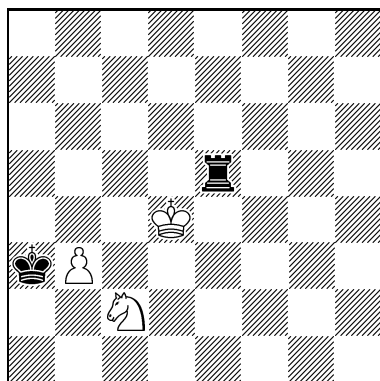


H#6 2.1;1.1... C+ 1+4
Philophagensteine

12845

Oleg Paradsinski

Tschaplinka

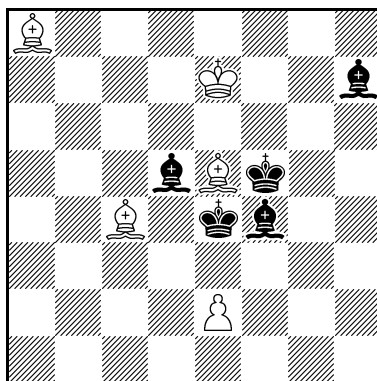


H#6 2.1;1.1... C+ 3+2
Beamenschach

12846

Norm Trigoboff

Ithaca

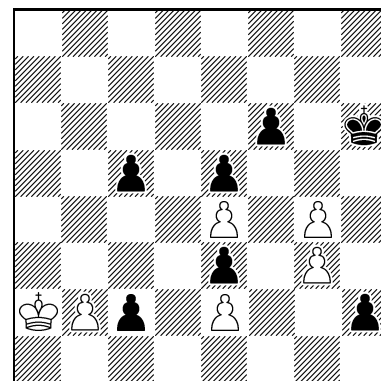


H#6 5+5
b) ♞c4→a6 & -♞e2
Rex Multiplex

12847

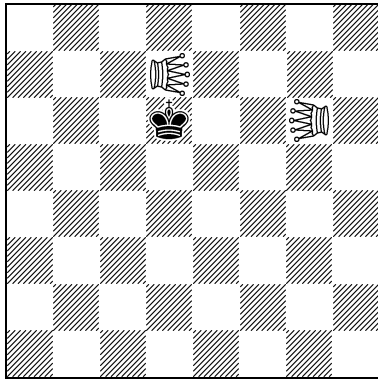
Sébastien Luce

Montreuil



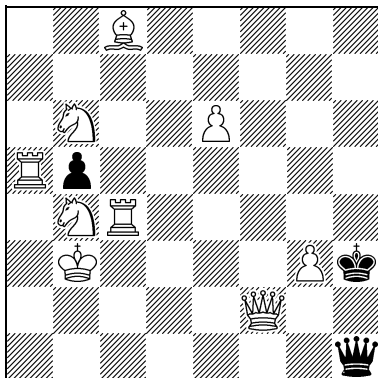
H#6 C+ 6+7
Philophagensteine

12848
Sébastien Luce
Haan for Hans



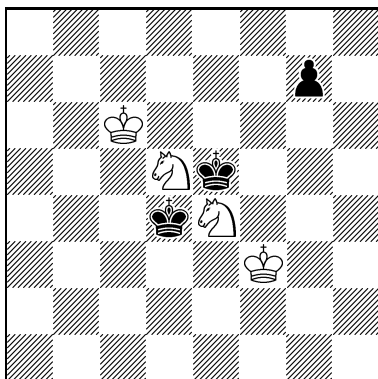
H#9** 2.1;1.1... C+ 2+1
 Haaner Schach
 ♔ = Kontragrashüpfer
 ♘ = Grashüpfer-2-nonstop

12851
Paul Wiereyn
Jean Lochet
Amersfoort / Beaupuy



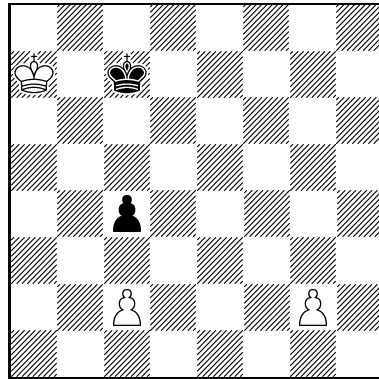
H=2 C+ 9+3
 3.1;1.1 & 1.2;1.1 Circe

12854
Norm Trigoboff
Ithaca



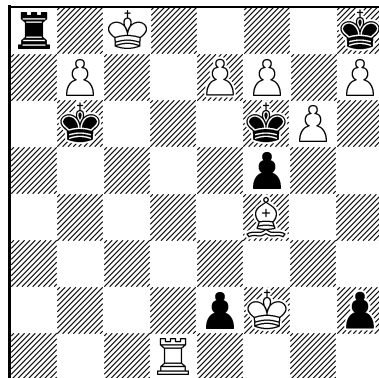
H=3.5 4+3
 Rex Multiplex

12849
Torsten Linß
Nordhausen



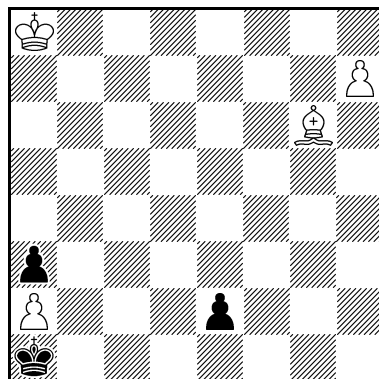
H#23.5 C+ 3+2
 Doppellängstzuger

12852
Norm Trigoboff
Ithaca



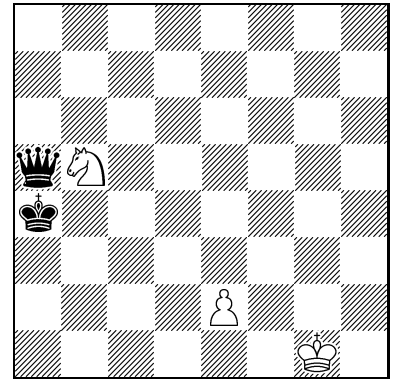
H=2.5 C+ 9+7
 Rex Multiplex

12855
Sébastien Luce
Montreuil
Hans Gruber & Bernd Ellinghoven gewidmet



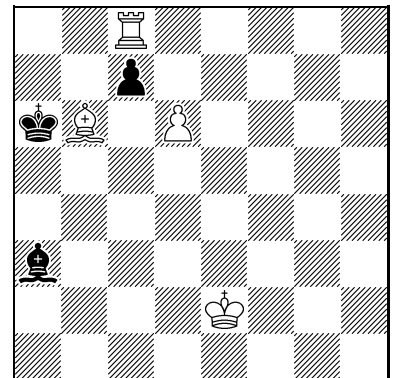
H=3.5 2;1.1... C+ 4+3
 Philophagensteine

12850
Torsten Linß
Nordhausen
Sébastien Luce gewidmet



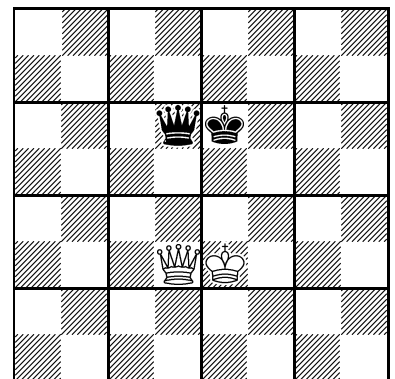
H#38 C+ 3+2
 Doppellängstzuger

12853
Eligiusz Zimmer
Piotrków Trybunalski



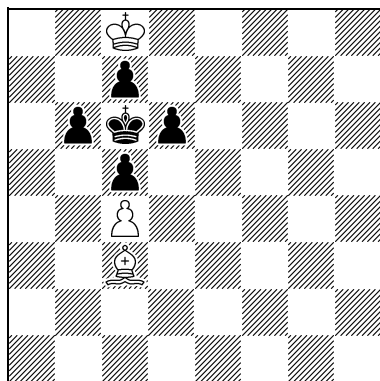
H=3 2.1;1.1;1.1 C+ 4+3

12856
Frank Fiedler
Mügel



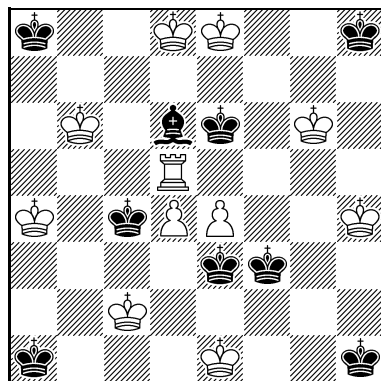
Grazer H=4 C+ 2+2
 2 Lösungen
 Circe, Gitterschach, Köko

12857
Kurt Keller
 Ulm
Frohe Ostern



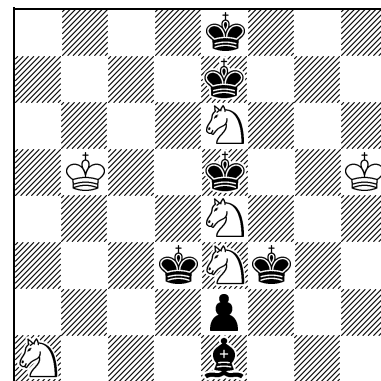
H=4 b) an der
 mittleren Horizontale
 gespiegelt (Kc1/Kc3)
 C+ 3+5

12858
Norm Trigoboff
 Ithaca



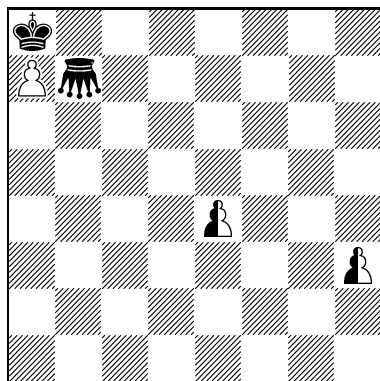
H=5 11+9
 Rex Multiplex

12859
Norm Trigoboff
 Ithaca



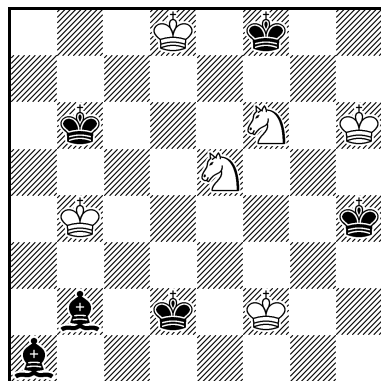
H=5.5 6+7
 Rex Multiplex

12860
Kıvanç Çefle
 İstanbul



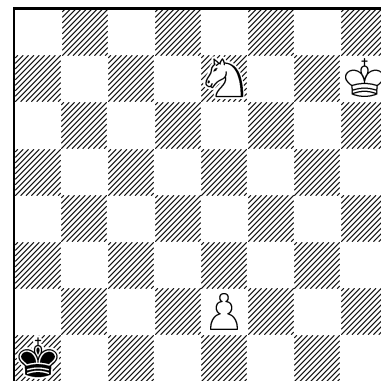
H=6 C+ 1+2+2
 Ohneschlag

12861
Norm Trigoboff
 Ithaca



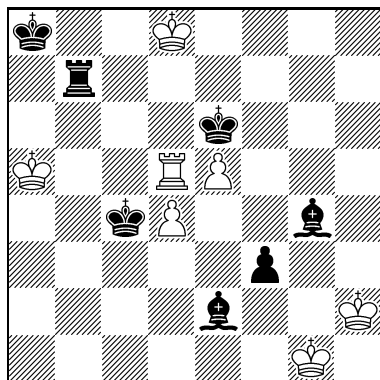
H=6.5 6+6
 Rex Multiplex

12862
Sébastien Luce
 Montreuil
*Viktoras Paliulionis & Evert J.
 van den Berg gewidmet*



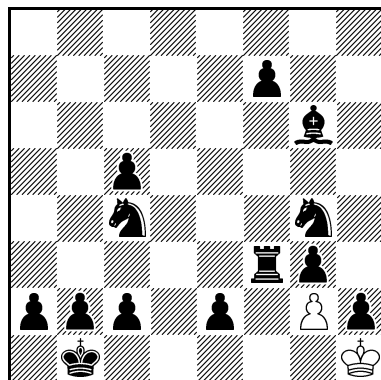
H=7 C+ 3+1
 Philophagensteine

12863
Norm Trigoboff
 Ithaca



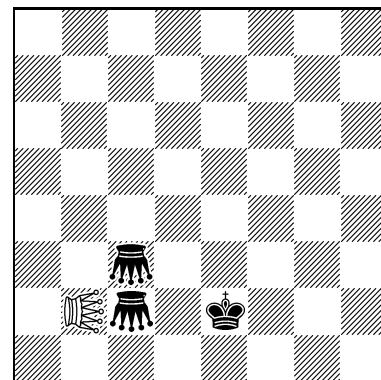
H=7 7+7
 Rex Multiplex

12864
Michail Chramzewitsch
Ya'aqov Mintz
 Bobruisk / Jerusalem



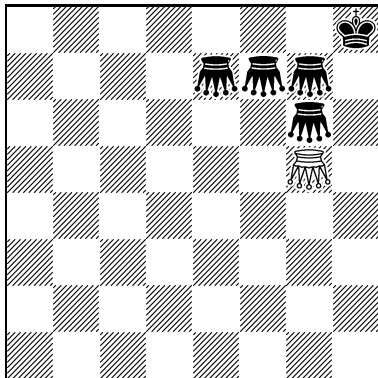
H=8 C+ 2+13

12865
Sébastien Luce
 Montreuil



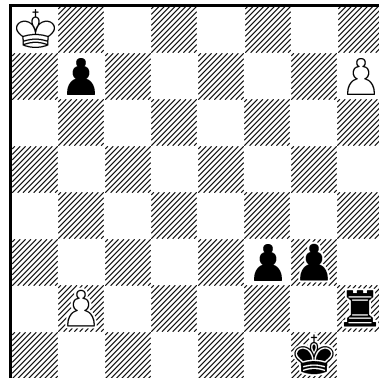
H=8.5* C+ 1+3
 Circe
 ♠ = Heuschrecke

12866
Sébastien Luce
 Montreuil
Václav Kotěšovec gewidmet



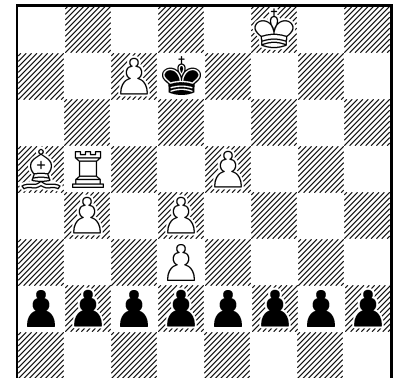
H=9 C+ 1+5

12867
Sébastien Luce
 Montreuil



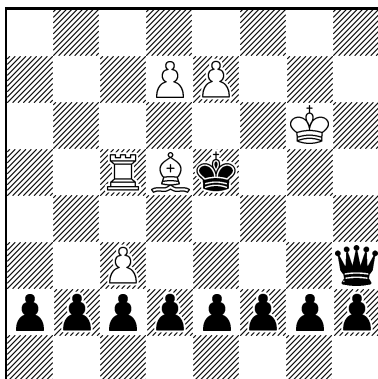
H=9 3+5
 Philophagensteine

12868
Manfred Rittirsch
 Buch am Erlbach
 1239v Jugendschach X/1984
 (Korr./Urdruck)



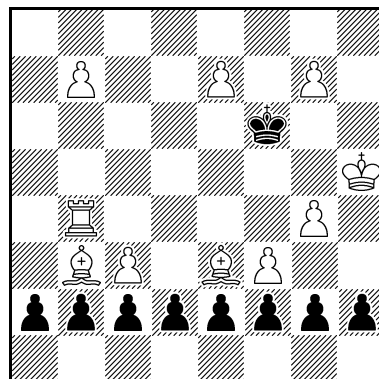
H=10.5 8+9
 Circe, Doppelkürzestzüge

12869
Manfred Rittirsch
 Buch am Erlbach



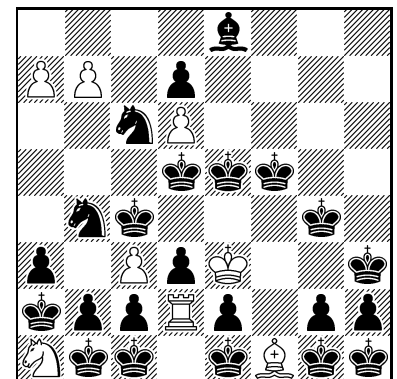
H=11.5 6+10
 Circe, Doppelkürzestzüge

12870
Manfred Rittirsch
 Buch am Erlbach



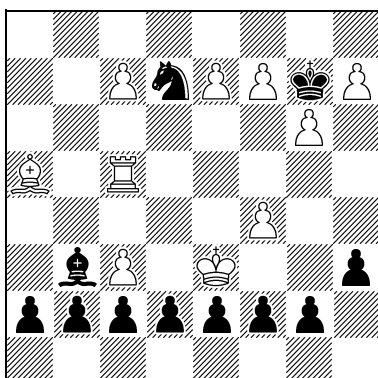
H=12.5 10+9
 Circe, Doppelkürzestzüge

12871
Norm Trigoboff
 Ithaca



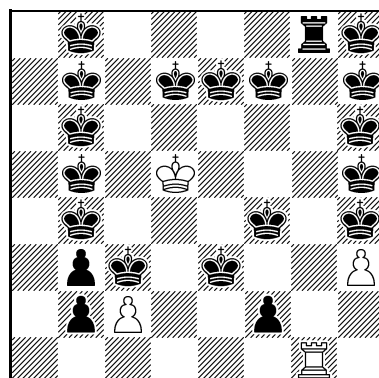
H=13 8+23
 Rex Multiplex ohne K-UW

12872
Manfred Rittirsch
 Buch am Erlbach



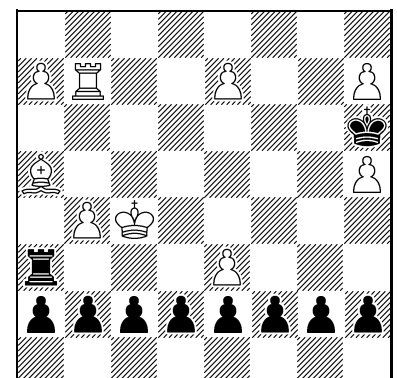
H=14.5 10+11
 Circe, Doppelkürzestzüge

12873
Norm Trigoboff
 Ithaca



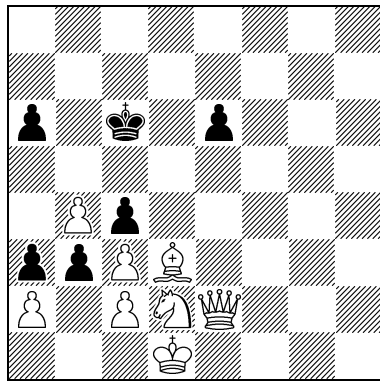
H=15 4+20
 Rex Multiplex

12874
Manfred Rittirsch
 Buch am Erlbach



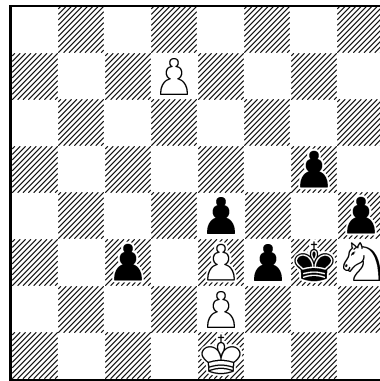
H=15.5 9+10
 Circe, Doppelkürzestzüge

12875
Wolfgang Langbrandtner
 Leimen



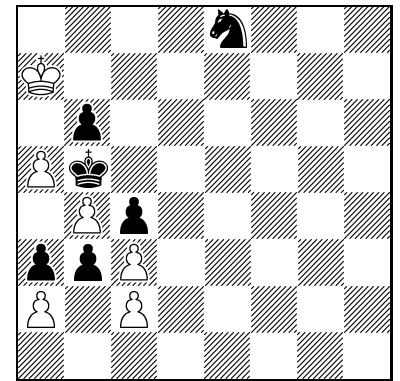
H==6 8+6

12876
Wolfgang Langbrandtner
 Leimen



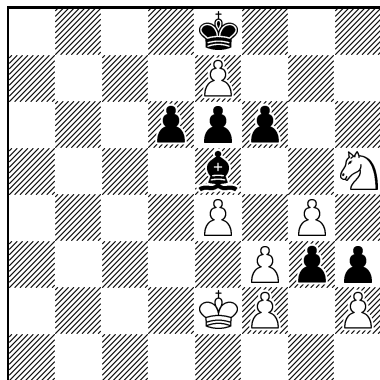
H==7.5 5+6

12877
Wolfgang Langbrandtner
 Leimen
Manfred Rittirsch gewidmet



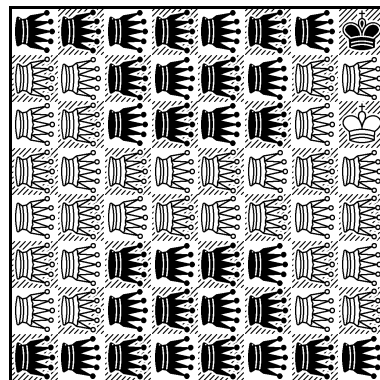
H==8 6+6

12878
Wolfgang Langbrandtner
 Leimen



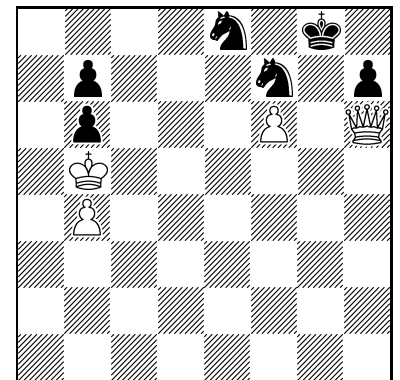
H==8 8+7

12879
Sébastien Luce
 Montreuil
Dedicated to Hans the White and the Black



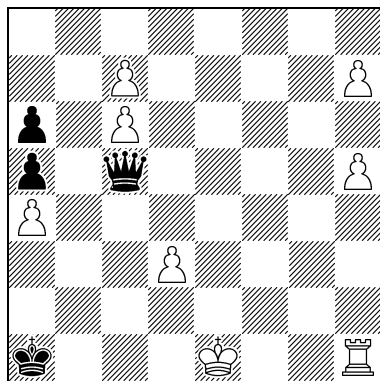
a) H==25 C+ 32+32
 b) Farbtausch aller Steine:
 H==25.5
 ABC, Bicultures rex exclusiv
 ♟♟ = Heuschrecke

12880
Jochen Lehmsick
 Bonn



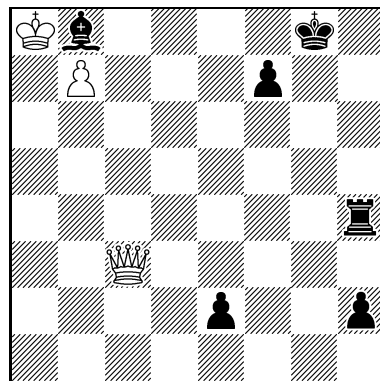
HD#3 (UD#) C+ 4+6
 2 Lösungen

12881
Jochen Lehmsick
 Bonn



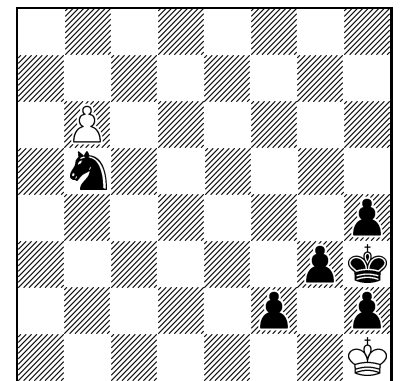
HD#3 4 Lösungen C+ 8+4

12882
Jochen Lehmsick
 Bonn



HD#3.5 (UD#) C+ 3+6

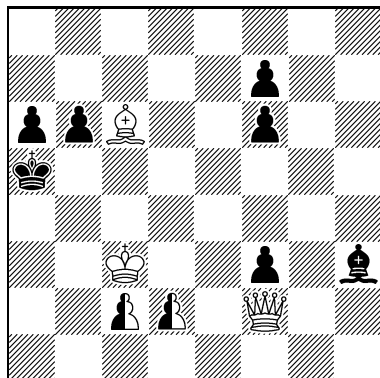
12883
Jochen Lehmsick
 Bonn



HS#3.5 2 Lösungen C+ 2+6

12884

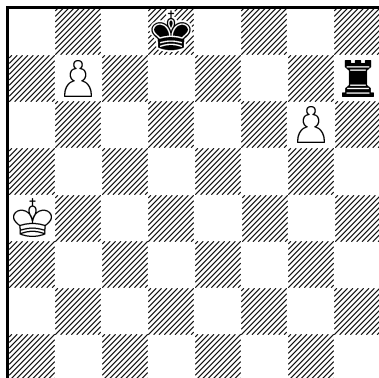
Franz Pacht
Sven Trommler
Michael Barth
Ludwigshafen / Dresden
/ Oelsnitz



HS#3.5 C+ 3+7+2
2 Lösungen
Volcanic Circe

12885

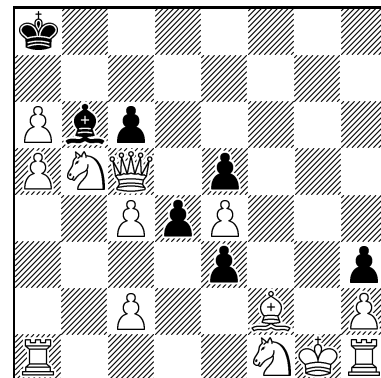
Iwan Brjuchanow
Tschaplinka



HS#4 C+ 3+2
b) ♔d8→g5
Masand

12886

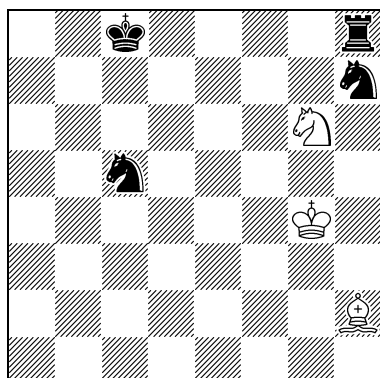
Christopher Jones
Bristol



HS#4 C+ 13+7
b) ♖a1→b1

12887

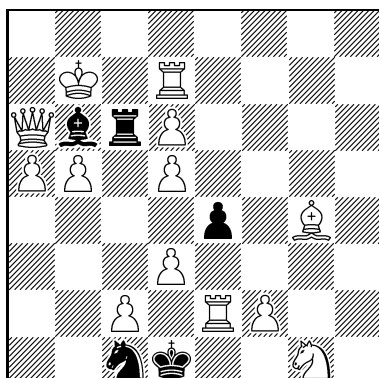
Iwan Brjuchanow
Tschaplinka



HS#4.5 C+ 3+4
b) ♞h7→g8
Masand

12888

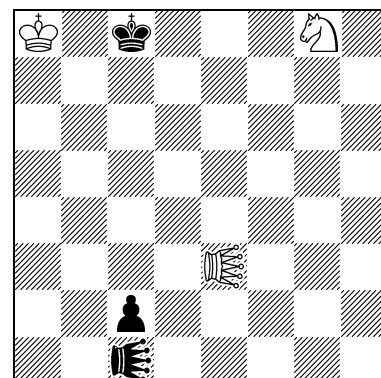
Abdelaziz Onkoud
Stains



HS#4.5 C+ 13+5
2 Lösungen

12889

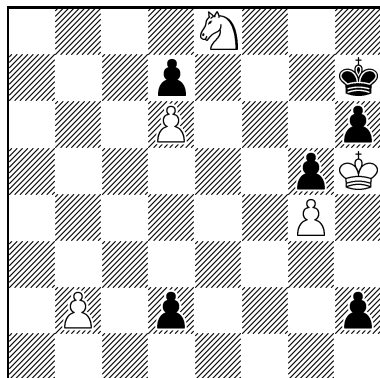
Sébastien Luce
Montreuil



HS#5.5 C+ 3+3
b) ♞g8→♖g8
♞♞ = Kontragrashüpfer

12890

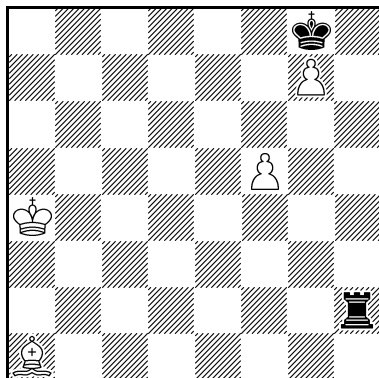
Sébastien Luce
Montreuil



HS#6 C+ 5+6

12891

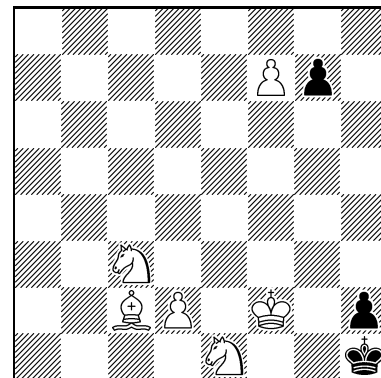
Daniel Novomesky
Bratislava



HS#7 C+ 4+2

12892

Wolfgang Langbrandtner
Leimen
Manfred Rittirsch gewidmet



HS=6.5 C+ 6+3

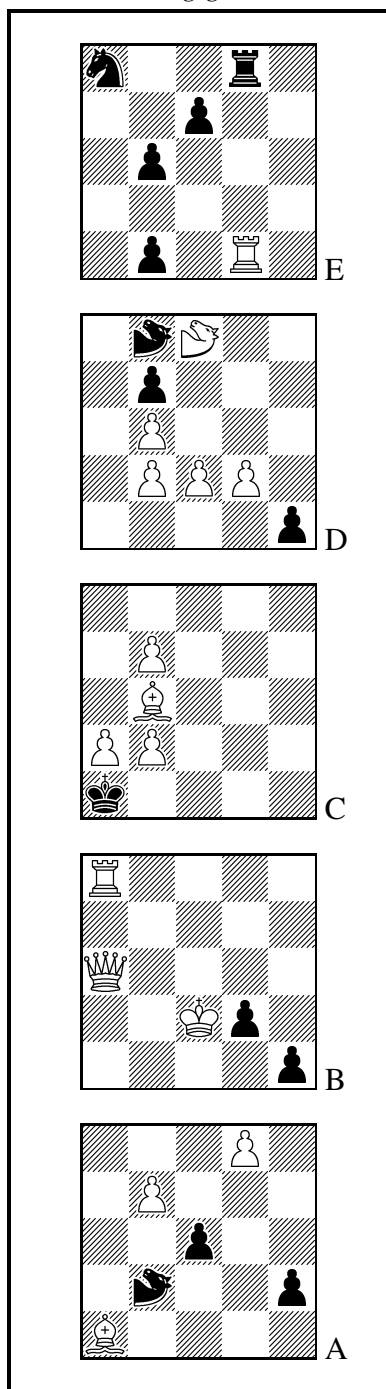
12893

Udo Marks

Eberholzen

Hans Gruber zum

60. Geburtstag gewidmet

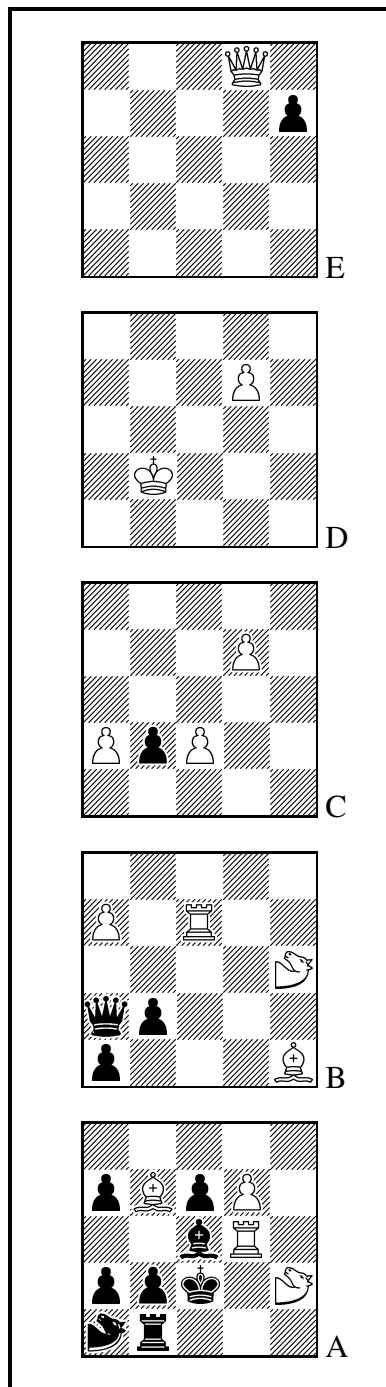


a) #2 C+ 16+14
 b) +♞a1B: #9
 5×5×5-Raumschach
 ♞♞ = Einhorn

12894

Udo Marks

Eberholzen

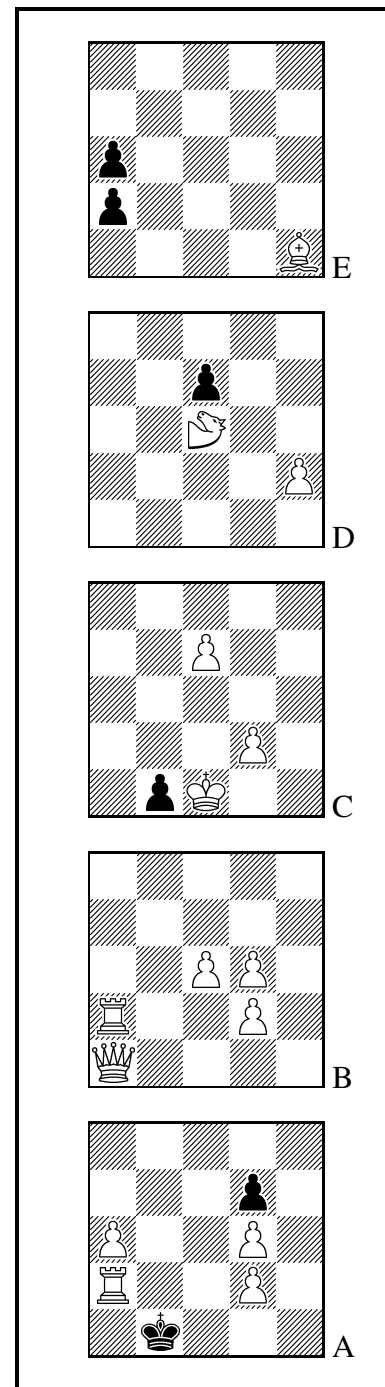


#8 C+ 14+13
 5×5×5-Raumschach
 ♞♞ = Einhorn

12895

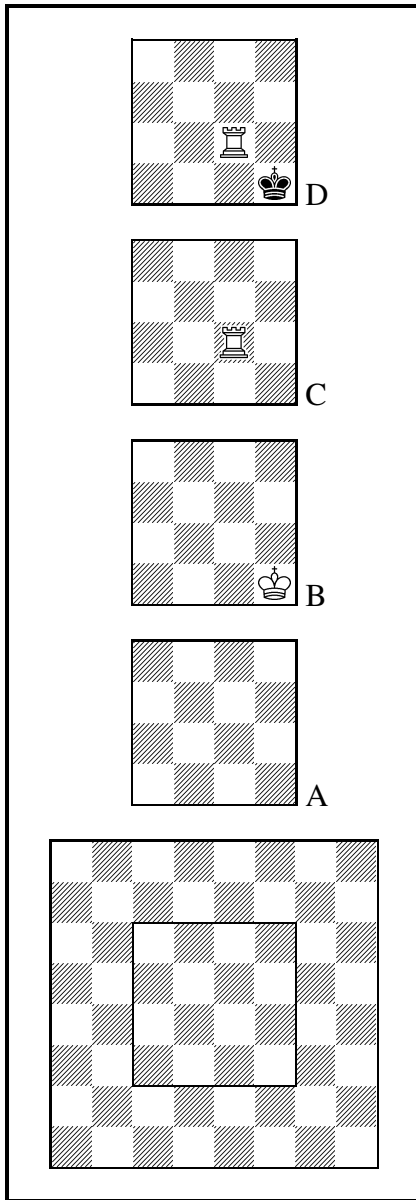
Udo Marks

Eberholzen



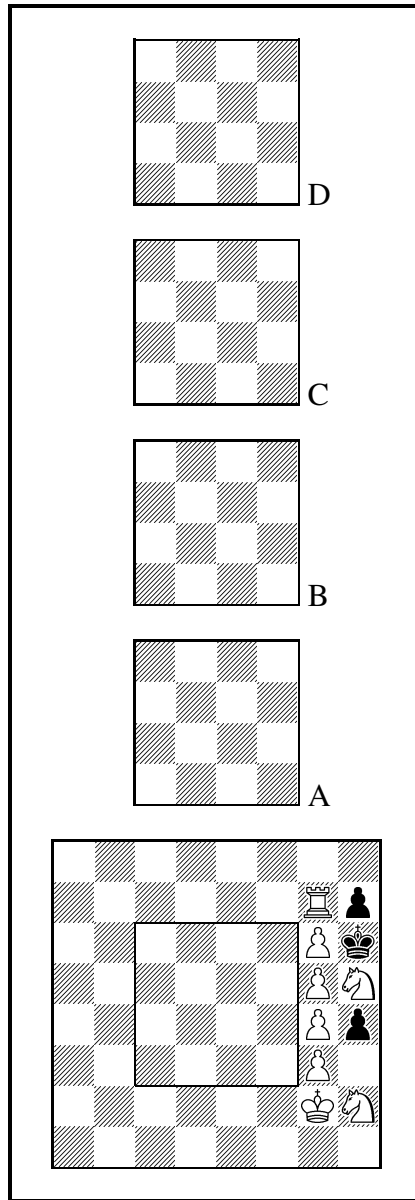
#10 15+6
 5×5×5-Raumschach
 ♞ = Einhorn

12896
Udo Marks
 Eberholzen



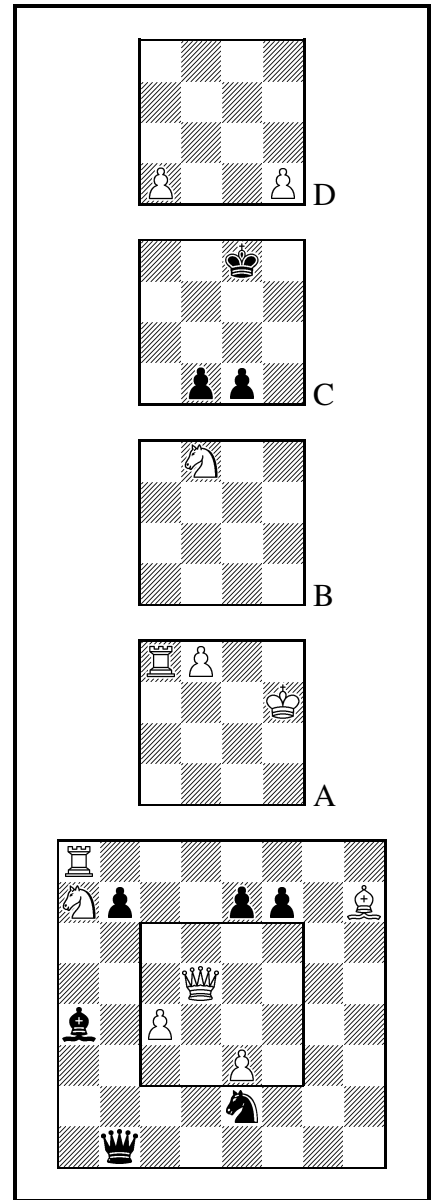
#4 2 Lösungen C+ 3+1
 Stereoschach

12897
Udo Marks
 Eberholzen
hg-Linien-Problem



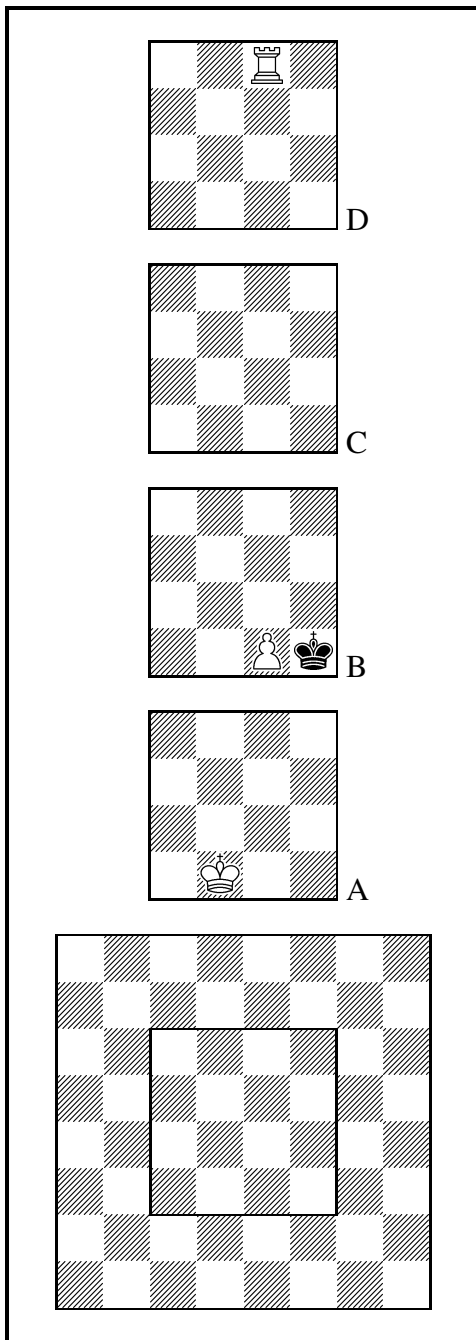
#6 C+ 8+3
 Stereoschach

12898
Udo Marks
 Eberholzen



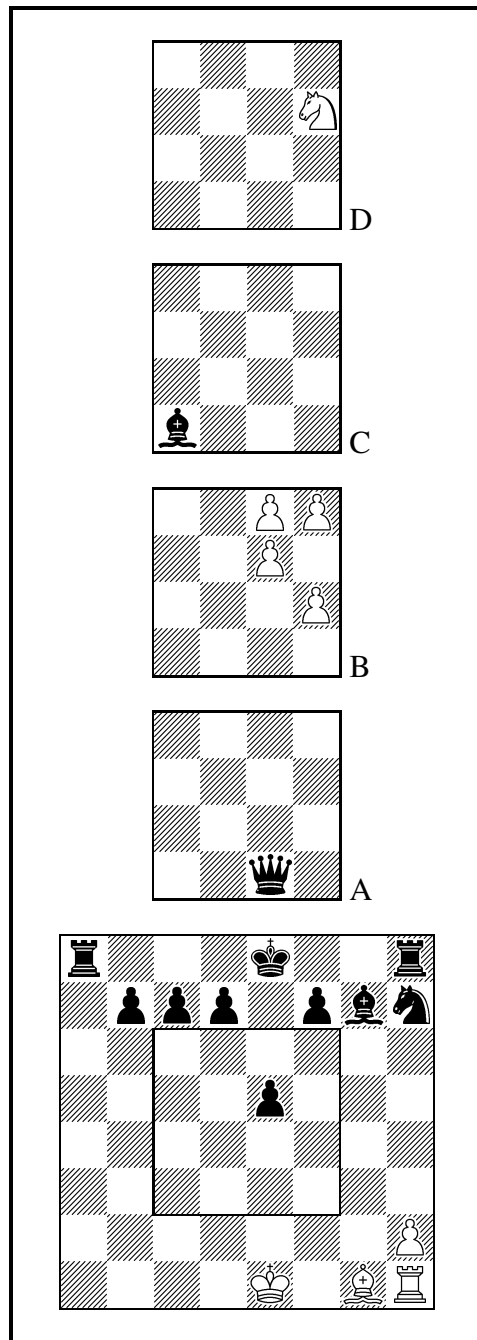
#9 12+9
 Stereoschach

12899
Udo Marks
Eberholzen



H#3 Zeroposition C+ 3+1
a) ♖e6D→e4, b) ♔f3B→f3C,
c) ♔f3B→f3A
Stereoschach

12900
Udo Marks
Eberholzen



H#3 5.1;1.1;1.1 C+ 9+12
Stereoschach